

THIS DRAWING IS UNPUBLISHED. RELEASED FOR PUBLICATION
 © COPYRIGHT - By - ALL RIGHTS RESERVED.

| REVISIONS | | | | | |
|-----------|-----|---------------------------|-----------|-----|------|
| P | LTR | DESCRIPTION | DATE | DWN | APVD |
| | G5 | REVISED PER ECO-17-002273 | 10OCT2017 | RK | AS |

SPECIFICATIONS

MATERIALS

CASE: THERMOPLASTIC, UL94V-0, BLACK
 ACTUATOR: THERMOPLASTIC, UL94V-0, SEE TABLE
 COVER: NICKEL SILVER
 SEAL: SILICON RUBBER, BLACK
 CONTACT: STAINLESS STEEL, PLATING-SILVER
 TERMINAL: BRASS, PLATING-SILVER/NICKEL

ELECTRICAL

MAX CONTACT RATING: 50MILLIAMPS@24V DC
 MIN CONTACT RATING: 10MICROAMPS@1V DC
 INITIAL CONTACT RESISTANCE: 100 MILLIOHMS MAX, PER EIA RS-448, METHOD 1
 INSULATION RESISTANCE: 100 MEGOHMS MIN @ 100VDC PER EIA RS-186-13E
 DIELECTRIC STRENGTH: 500 VAC 50/60 HZ FOR 1 MINUTE
 CONTACT BOUNCE: 10 MILLISECOND MAX PER EIA-448-18, METHOD 15

MECHANICAL

ACTUATOR OPERATING FORCE: SEE TABLE
 ACTUATOR TRAVEL: 0.35±0.2mm

DURABILITY

UP TO 1,000,000 CYCLES, AT RATED LOAD PER EIA-RS-448, METHOD 8
 FINAL CONTACT RESISTANCE: 200 MILLIOHMS MAX
 CONTACT BOUNCE: 20 MILLISECONDS MAX
 ACTUATOR FORCE: WITHIN ±30% OF INITIAL VALUE

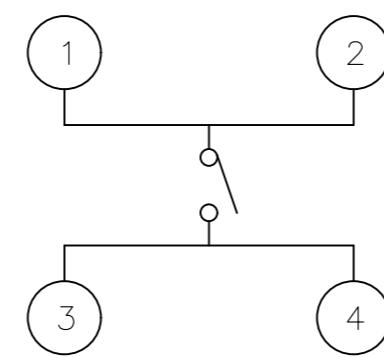
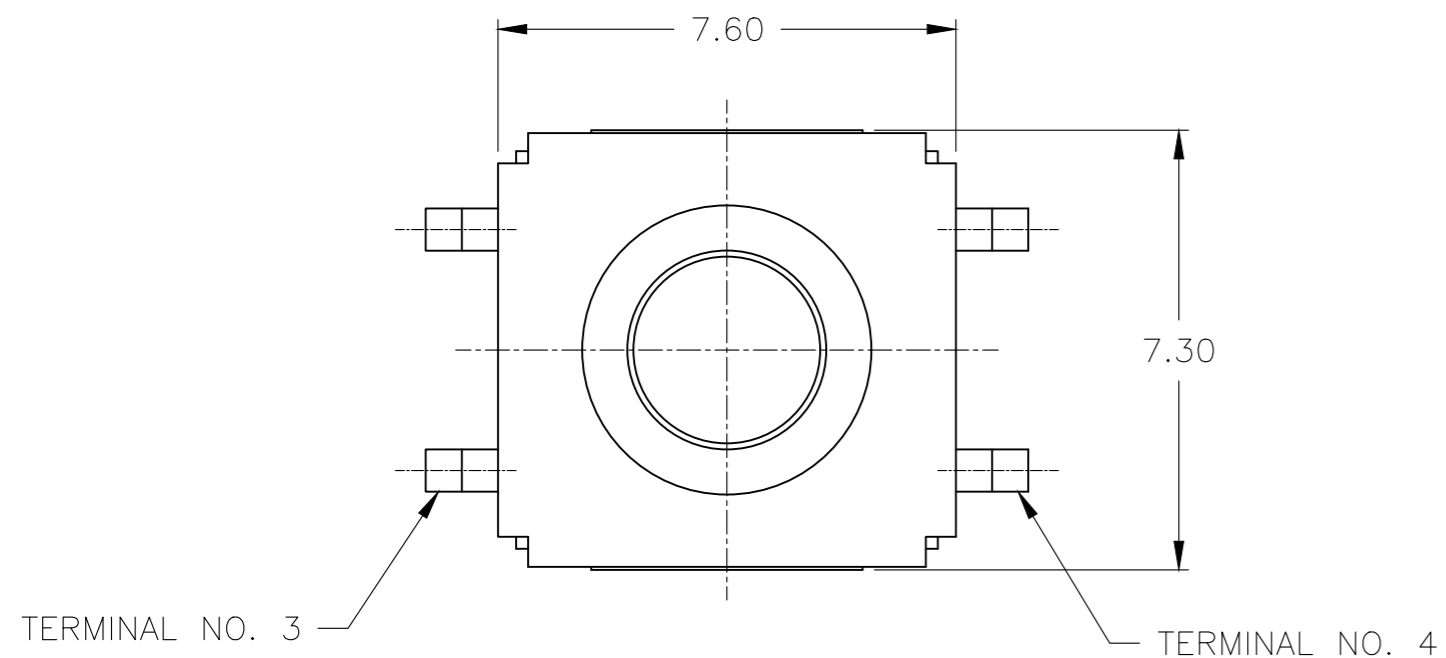
ENVIRONMENTAL

OPERATING TEMPERATURE RANGE: -35°C to +85°C
 STORAGE TEMPERATURE RANGE: -35°C to +85°C
 HUMIDITY: 96 HOURS PER EIA-186-1E
 INSULATION RESISTANCE: 10 MEGOHMS MIN
 DIELECTRIC STRENGTH: 250VAC
 CONTACT RESISTANCE: 100 MILLIOHMS MAX
 DRY HEAT TEST: 85°C FOR 96 HOURS PER IEC 60068-2-2, TEST B,
 NO CHANGE IN INITIAL ELECTRICAL AND MECHANICAL CHARACTERISTICS
 COLD TEST: -35°C FOR 96 HOURS PER IEC 60068-2-1, TEST A;
 NO CHANGE IN INITIAL ELECTRICAL AND MECHANICAL CHARACTERISTICS
 THERMAL CYCLING: 5 CYCLES, -35°C to +85°C
 HUMIDITY-TEMPERATURE CYCLING, EIA 364-31B, METHOD III
 CONTACT RESISTANCE 100 MILLIOHMS MAX
 RESISTANCE TO SOLDERING HEAT PER 109-201, COND B

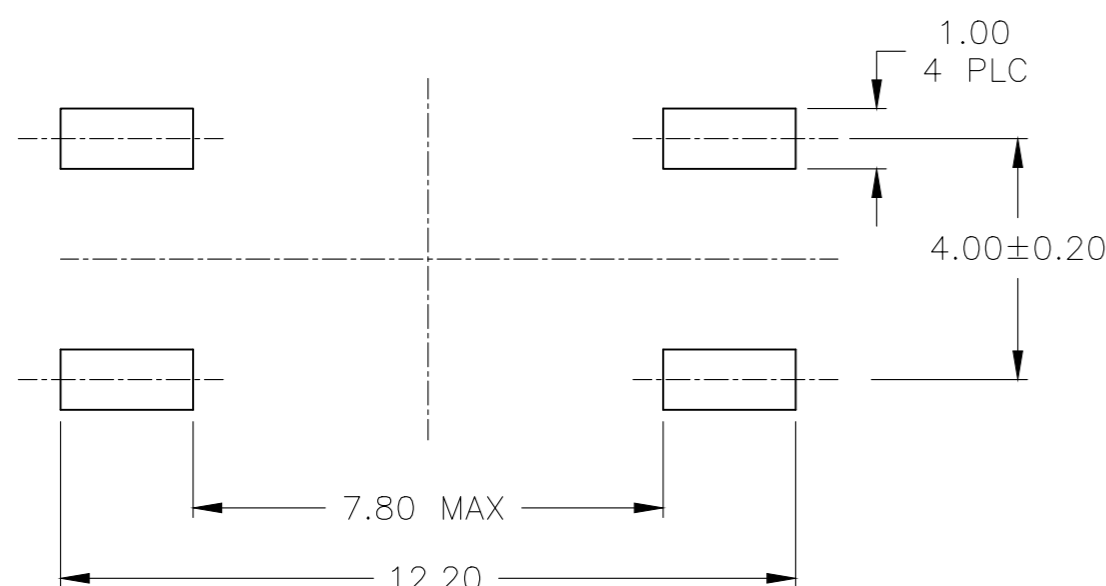
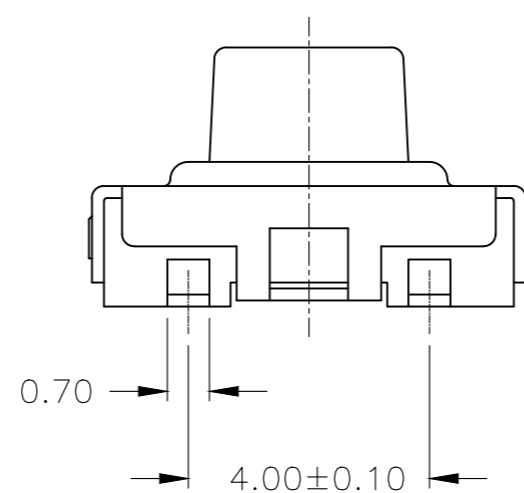
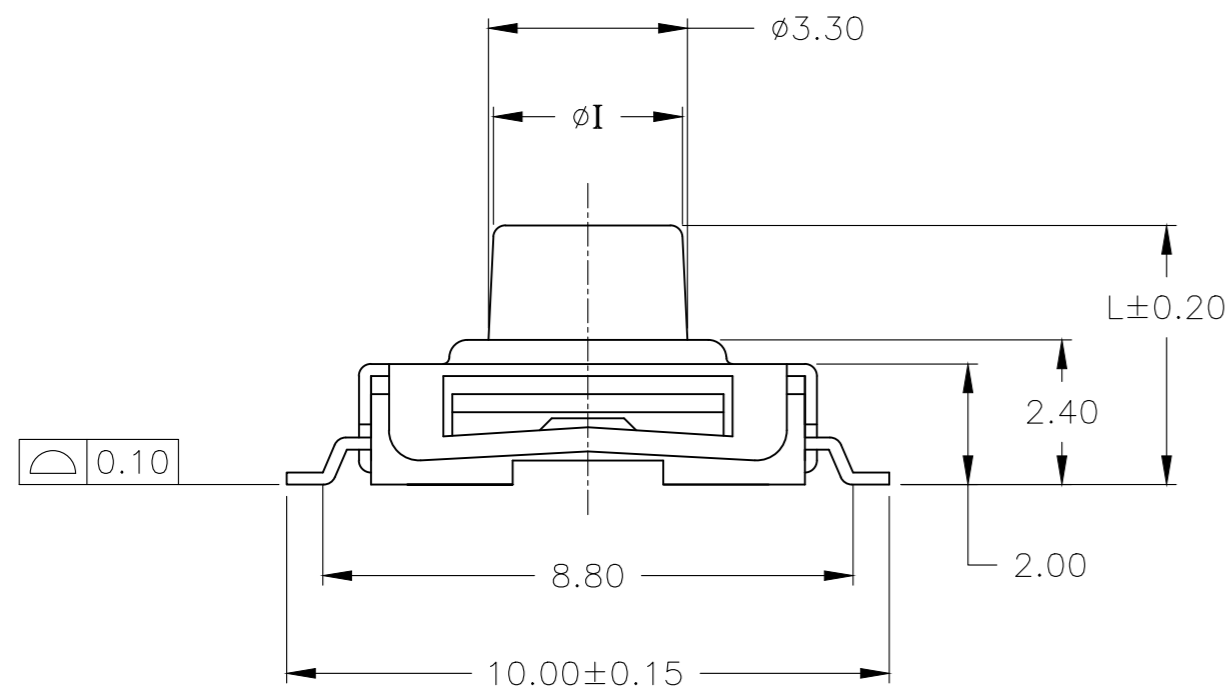
SEALING PER IP67

SOLDERABILITY: PER EIA-364-52, CLASS 1, CATEGORY 2

- 1 PARTS TO BE PACKAGED ON TAPE AND REEL PER EIA-481
- 2 ALL MATERIALS AND FINISHES SHALL COMPLY WITH EU DIRECTIVE 2002/95/EC OF 27JAN2003 (ROHS)



CIRCUIT DIAGRAM



P.C.B MOUNTING SOLDER LAND DIMENSION

| | | | | | | |
|---|-----------|----------------|-----------------|-------------|--------|-------------|
| 1 | T&R | Blue | 260 +/-50gf | 3.10mm | 4.50mm | 1571294-8 |
| 1 | T&R | Ivory | 160 +/-50gf | 3.10mm | 4.50mm | 1571294-7 |
| 1 | OBSOLETE | T&R | RED | 260 +/-50gf | 3.10mm | 4.30mm |
| | | BULK | RED | 260 +/-50gf | 3.10mm | 4.30mm |
| 1 | | T&R | Black | 160 +/-50gf | 3.10mm | 5.00mm |
| | | BULK | Black | 160 +/-50gf | 3.10mm | 5.00mm |
| 1 | | T&R | Black | 160 +/-50gf | 3.10mm | 4.30mm |
| | | BULK | Black | 160 +/-50gf | 3.10mm | 4.30mm |
| | Packaging | Actuator Color | Operating force | DIM I | Dim L | PART NUMBER |

| | | | | | | |
|--|--|-----------------------------|---|--|--|--|
| THIS DRAWING IS A CONTROLLED DOCUMENT. | | DWN R BROWN 09DEC02 | TE Connectivity SWITCH ASSEMBLY, TACTILE, 6mm SEALED, SMT | | | |
| DIMENSIONS: mm | | CHK M SARVER 09DEC02 | | | | |
| TOLERANCES UNLESS OTHERWISE SPECIFIED: | | APVD M SARVER 09DEC02 | NAME | | | |
| 0 PLC ± - | | PRODUCT SPEC | SIZE | | | |
| 1 PLC ± - | | APPLICATION SPEC | CAGE CODE | | | |
| 2 PLC ± 0.30 | | | DRAWING NO | | | |
| 3 PLC ± - | | | RESTRICTED TO | | | |
| 4 PLC ± - | | | SCALE | | | |
| ANGLES ± - | | | SHEET | | | |
| FINISH | | WEIGHT 0.000000 | REV | | | |
| | | CUSTOMER DRAWING | G5 | | | |