

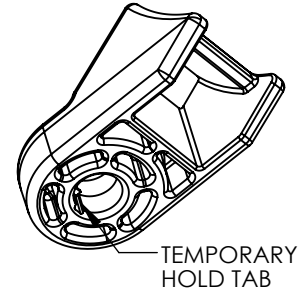
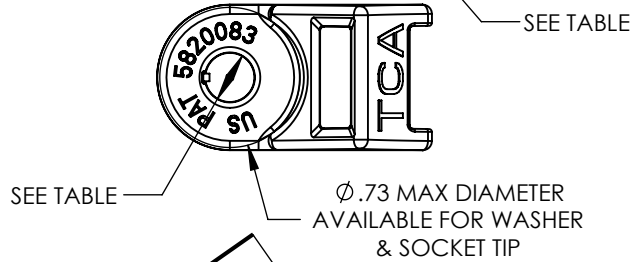
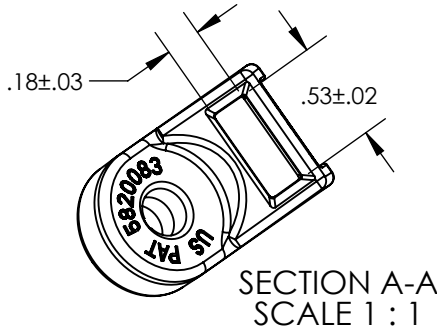
SW2014



SUPERSEDES DWG MT1013002CST, REV 02

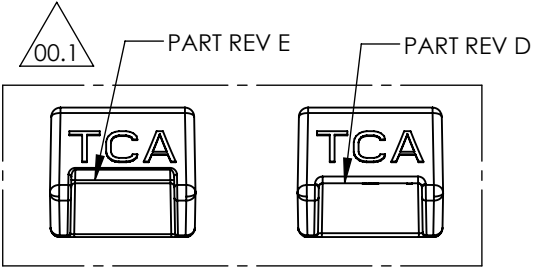
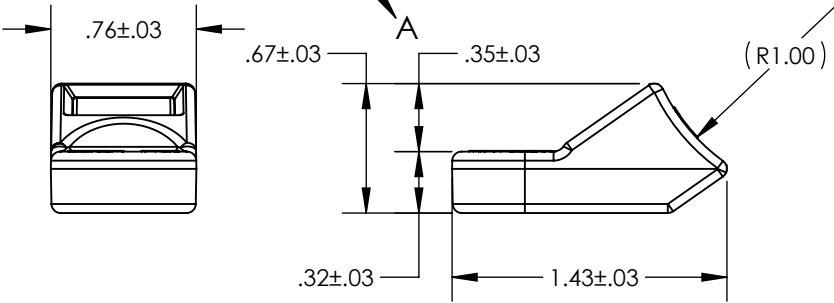
| Revision level |                |      | Revision Record | Changed | Date      | Approved | Date      |
|----------------|----------------|------|-----------------|---------|-----------|----------|-----------|
| Drawing        | State          | Part |                 |         |           |          |           |
| 00.1           | Design Release | -    | SEE ECN# 013200 | KEP     | 7/20/2015 | KAC      | 7/20/2015 |

00.1



00.1

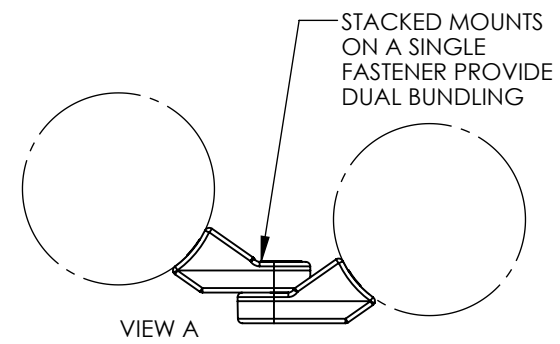
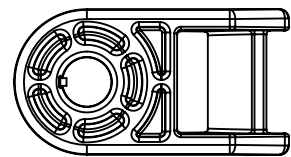
| TABLE OF PART NUMBERS |          |          |
|-----------------------|----------|----------|
| PART NUMBER           | PART REV | HOLE DIA |
| HDM19                 | D or E   | 3/16"    |
| HDM25                 | D or E   | 1/4"     |
| HDM312                | D or E   | 5/16"    |



PRODUCT EXISTS WITH BOTH GEOMETRIES SHOWN ABOVE

00.1

REFERENCE FEATURES:  
 - RUGGED HEAVY DUTY DESIGN & MATERIAL  
 - 250 lb ASSEMBLY STRENGTH IN ANY DIRECTION  
 - WITHSTANDS 115 in-lb OF TORQUE APPLIED TO 1/4" FASTENER WITH WASHER  
 - FASTEN MOUNT WITH STUD, BOLT, SCREW, RIVET, NAIL, ETC...  
 - SMALL TAB INSIDE HOLE ENGAGES THREADS TEMPORARILY  
 - ACCEPTS MOST STANDARD CABLE TIES UP TO 1/2" WIDE  
 - MOUNTS ARE DESIGNED TO BE VERTICALLY STACKED ON A SINGLE FASTENER TO ALLOW DUAL BUNDLING - SEE VIEW A  
 - ALSO CHAINING OF MULTIPLE BUNDLES ON A SINGLE MOUNT IS AVAILABLE IF T250 WITH BUCKLE/MOUNT FEATURE IS USED  
 - OPTIONAL MOUNTING HOLE DIAMETERS ARE AVAILABLE UP TO 5/16" - CONTACT TYTON FOR SPECIFIC HOLE SIZES & PRICING



Material  
**PA66HIRHSUV BLACK**

Units: **inches**  
 Dimension without tolerances details to:  
 .xxxx = ± .0005  
 .xxx = ± .005  
 .xx = ± .01  
 .x = ± .03  
 None = ± .06  
 < = ± 0.5°  
 Dimension Formatted in [mm]

The copyright of this drawing is reserved by HellermannTyton. It is issued on condition that it is not reproduced, copied, or disclosed to a third party, either wholly or in part, without the consent of HellermannTyton.

|  |     |           |
|--|-----|-----------|
| Drawn  | KEP | 7/20/2015 |
| Approved   | KAC | 7/20/2015 |
| <b>HellermannTyton</b>   |     |           |
| North America<br>Email: corp@htamericas.com<br>Web: www.hellermann.tyton.com |     |           |

Article/Type-No SEE TABLE  
 Title **HEAVY-DUTY CABLE TIE MOUNT WITH MOUNTING HOLE**  
 Drawing-No PRODUCTION : Phase  
**15-0351-001-CSU**

Scale 1:1  
 Project Number PRP 15-0351  
 Format AH  
 Sheet 1/1

00.1