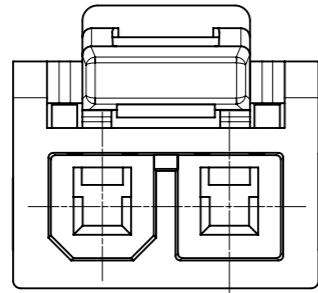


NOTES:

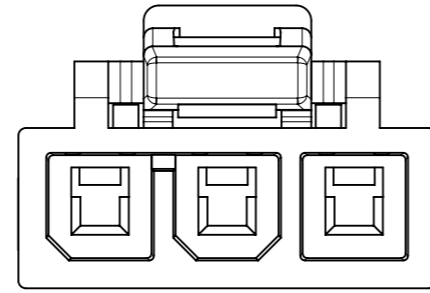
1. MATERIAL: NYLON, BLACK,UL 94-V0
2. FINISH: NONE.
3. PRODUCTION SPECIFICATION: 2125150000-PS;
APPLICATION SPECIFICATION: 2125150001-AS.
4. PACKAGING SPECIFICATION: 2125140001-PK.
5. THIS HOSUING TO BE USED WITH FEMALE TERMINAL SERIES 212515 AND TPA SERIES 212516.
6. THIS PART MATES WITH SERIES 215915.
7. THIS PART CONFORMS TO CLASS 'B' REQUIREMENTS OF COSMETIC SPECIFICATION PS-45499-002.

FUNCTIONAL SYMBOLS	THIS DRAWING CONTAINS INFORMATION THAT IS PROPRIETARY TO MOLEX ELECTRONIC TECHNOLOGIES, LLC AND SHOULD NOT BE USED WITHOUT WRITTEN PERMISSION		<div style="text-align: center; font-size: 24px; font-weight: bold;">molex</div>			
	FUNCTIONAL SYMBOLS	THIS DRAWING CONTAINS INFORMATION THAT IS PROPRIETARY TO MOLEX ELECTRONIC TECHNOLOGIES, LLC AND SHOULD NOT BE USED WITHOUT WRITTEN PERMISSION				
$\nabla_A = 0$ $\nabla_E = 0$ $\nabla_V = 0$	DIMENSION UNITS: mm SCALE: 2:1	CURRENT REV DESC: EC NO: 679543 DRWN: ZIXUAG 2021/09/28 CHK'D: XQZHANG 2021/09/29 APPR: XQZHANG 2021/09/29	mini-fit max sr receptacle			
DIVISIONAL SYMBOLS	GENERAL TOLERANCES (UNLESS SPECIFIED) ANGULAR TOL $\pm 0.5^\circ$ 4 PLACES \pm 3 PLACES \pm 2 PLACES ± 0.25 1 PLACE ± 0.35 0 PLACES \pm	INITIAL REVISION: DRWN: ZIXUAG 2021/05/24 APPR: YXZHENG 2021/07/19	PRODUCT CUSTOMER DRAWING			
	DRAFT WHERE APPLICABLE MUST REMAIN WITHIN DIMENSIONS THIRD ANGLE PROJECTION	DRAWING: A3-SIZE SERIES: 215913	MATERIAL NUMBER: 2159130000-SD CUSTOMER: GENERAL CUSTOMER	DOCUMENT NUMBER: 2159130000-SD DOC TYPE: PSD DOC PART: 000 REVISION: A1	SHEET NUMBER: 1 OF 2	

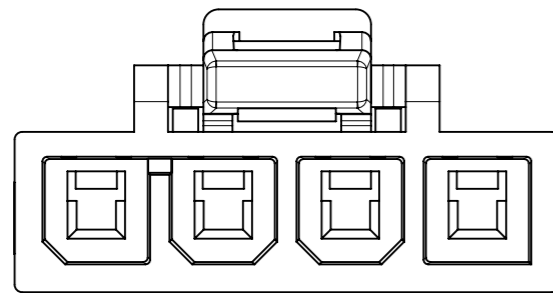
CKT SIZE	PART NUMBER	DIM_X
2	215913-1002	10.10
3	215913-1003	13.80
4	215913-1004	18.00
5	215913-1005	22.20
6	215913-1006	26.40



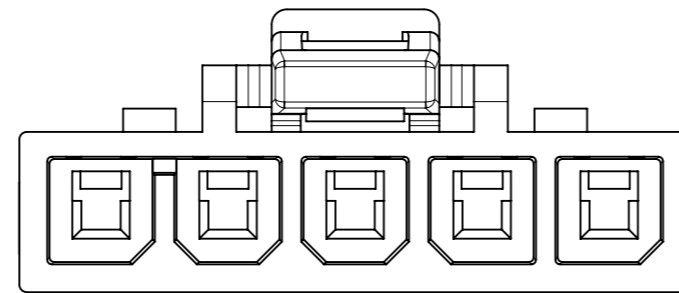
2CKT



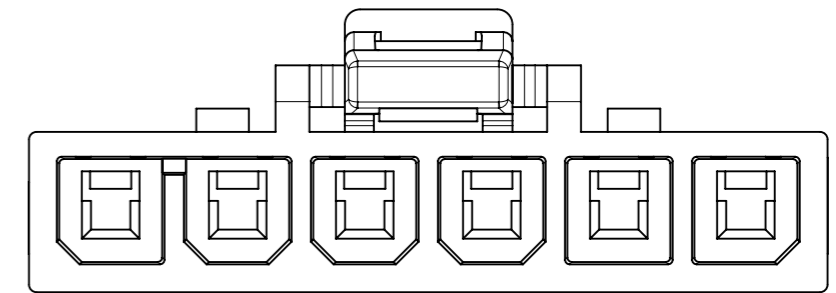
3CKT



4CKT



5CKT



6CKT

FUNCTIONAL SYMBOLS	THIS DRAWING CONTAINS INFORMATION THAT IS PROPRIETARY TO MOLEX ELECTRONIC TECHNOLOGIES, LLC AND SHOULD NOT BE USED WITHOUT WRITTEN PERMISSION		CURRENT REV DESC:		molex																				
	$\nabla_A = 0$ $\nabla_F = 0$ $\nabla_P = 0$	DIMENSION UNITS: mm SCALE: 4:1						GENERAL TOLERANCES (UNLESS SPECIFIED)																	
DIVISIONAL SYMBOLS	<table border="1"> <thead> <tr> <th></th> <th>MM</th> <th>INCH</th> </tr> </thead> <tbody> <tr> <td>4 PLACES</td> <td>±</td> <td>±</td> </tr> <tr> <td>3 PLACES</td> <td>±</td> <td>±</td> </tr> <tr> <td>2 PLACES</td> <td>± 0.25</td> <td>±</td> </tr> <tr> <td>1 PLACE</td> <td>± 0.35</td> <td>±</td> </tr> <tr> <td>0 PLACES</td> <td>±</td> <td>±</td> </tr> </tbody> </table>			MM	INCH	4 PLACES	±	±	3 PLACES	±	±	2 PLACES	± 0.25	±	1 PLACE	± 0.35	±	0 PLACES	±	±	EC NO: 679543 DRWN: ZIXUAQ 2021/09/28 CHK'D: XQZHANG APPR: XQZHANG 2021/09/29		MINI-FIT MAX SR RECEPTACLE PRODUCT CUSTOMER DRAWING		
		MM	INCH																						
4 PLACES	±	±																							
3 PLACES	±	±																							
2 PLACES	± 0.25	±																							
1 PLACE	± 0.35	±																							
0 PLACES	±	±																							
DRAFT WHERE APPLICABLE MUST REMAIN WITHIN DIMENSIONS		THIRD ANGLE PROJECTION	DRAWING: A3-SIZE	SERIES: 215913	MATERIAL NUMBER: SEE TABLE	CUSTOMER: GENERAL CUSTOMER	SHEET NUMBER: 2 OF 2																		