

4

3

2

1

THIS DRAWING IS UNPUBLISHED. RELEASED FOR PUBLICATION  
© COPYRIGHT ALL RIGHTS RESERVED.

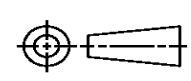
LOC	DIST	REVISIONS			
P	LTR	DESCRIPTION	DATE	DWN	APVD
	B1	ECR-14-010131	18AUG2014	GK	HMR

# REPLACED BY OCEAN STYLE APPLICATOR PART NUMBER 2266323-1

FOR REPLACEMENT PARTS FOR APPLICATOR 1528747 REFER TO ADDITIONAL PAGE(S). SPARE PARTS KIT (IF LISTED) WILL REMAIN AVAILABLE.

THE REPLACEMENT OCEAN STYLE APPLICATOR HAS THE SAME TERMINATOR/PRESS INTERFACE AS APPLICATOR 1528747

THIS DRAWING IS A CONTROLLED DOCUMENT.		DWN	GOPALAKRISHNA HV														
DIMENSIONS:		CHK	RAGHAVENDRA														
TOLERANCES UNLESS OTHERWISE SPECIFIED:		APVD	RAGHAVENDRA														
<table border="0"> <tr><td>0 PLC</td><td>±</td></tr> <tr><td>1 PLC</td><td>±</td></tr> <tr><td>2 PLC</td><td>±</td></tr> <tr><td>3 PLC</td><td>±</td></tr> <tr><td>4 PLC</td><td>±</td></tr> <tr><td>ANGLES</td><td>±</td></tr> </table>		0 PLC	±	1 PLC	±	2 PLC	±	3 PLC	±	4 PLC	±	ANGLES	±	PRODUCT SPEC	NAME		
0 PLC	±																
1 PLC	±																
2 PLC	±																
3 PLC	±																
4 PLC	±																
ANGLES	±																
MATERIAL		APPLICATION SPEC	FINE ADJUST SIDE FEED HDI APPLICATOR														
FINISH		WEIGHT	SIZE	CAGE CODE	DRAWING NO												
			A3		©- 1528747												
		CUSTOMER DRAWING	SCALE	SHEET 1 OF 2	REV B1												

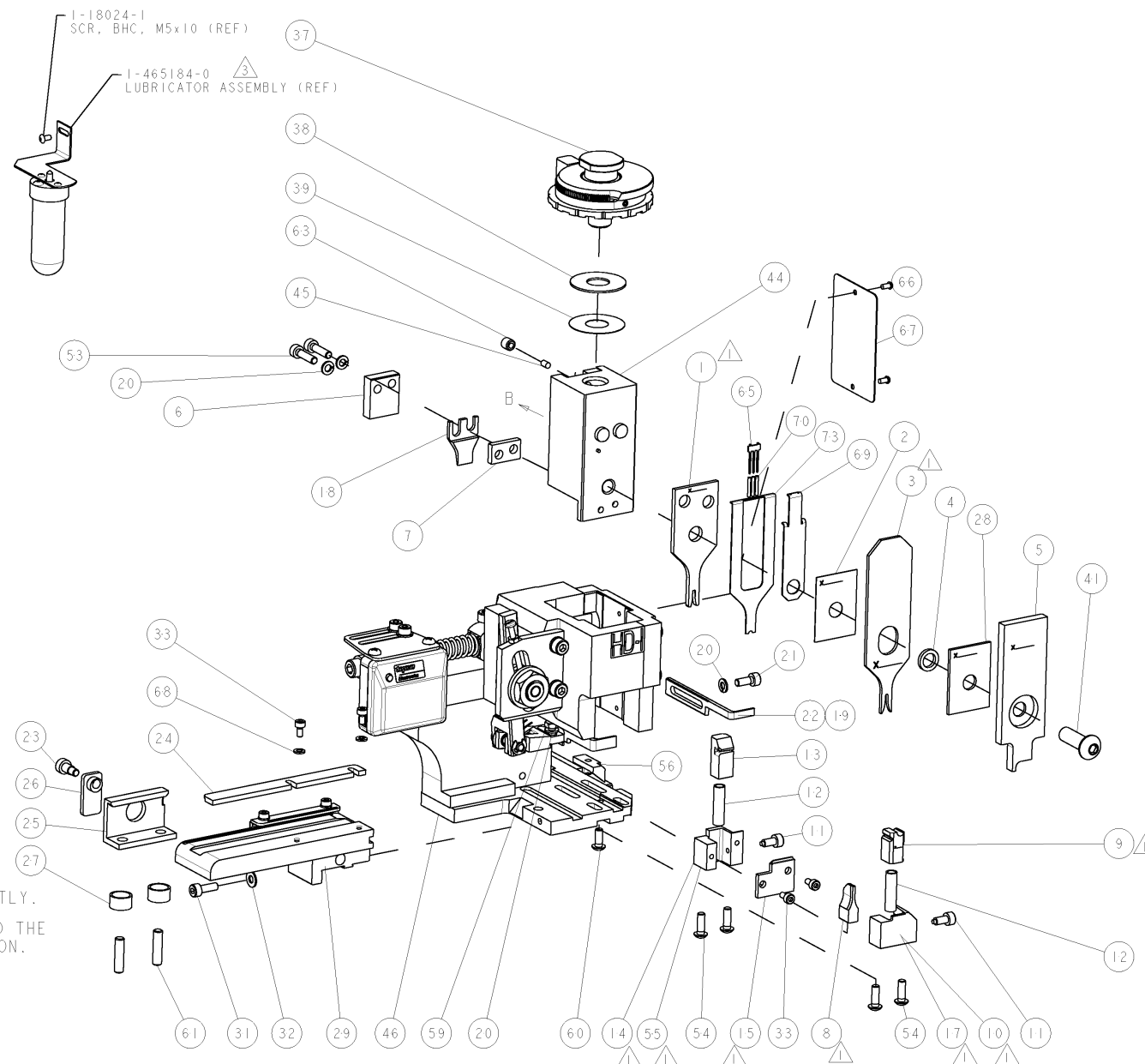


PART NUMBER	REV	TERMINATOR	FEED TYPE	DESCRIPTION
1528747-1	B	LEADMAKER	MECH POST FEED	CUTS CARRIER
1528747-2	B	BENCH	MECH PRE FEED	CUTS CARRIER
1528747-6	B	LEADMAKER	MECH POST FEED	CONTINUOUS CARRIER
7-1528747-1	B	LEADMAKER	MECH POST FEED	-1 AND SPARE PARTS
7-1528747-2	B	BENCH	MECH PRE FEED	-2 AND SPARE PARTS
7-1528747-6	B	LEADMAKER	MECH POST FEED	-6 AND SPARE PARTS
7-1528747-7	A	-	-	SPARE PARTS KIT

CRIMP	SIZE	TYPE	RANGE
WIRE	1.40 [ .055 IN ]	F	24-20 AWG
INSUL	1.57 [ .062 IN ]	O	0.64-1.52 [ .025-.060 IN ]
WIRE STRIP LENGTH	3.18-3.96 [ .125-.156 IN ]		APPL INSTRUCTIONS 408-8322 & 408-8490
TERMINAL APPL SPEC	114-25038		FEED 6.35 [ .250 IN ]

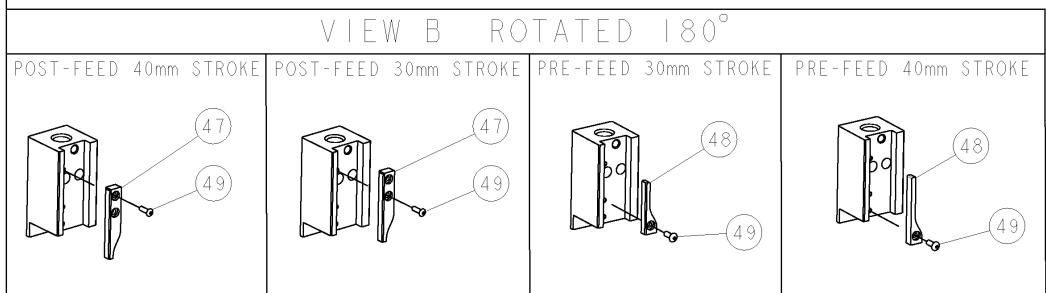
  

WIRE SIZE	CRIMP HEIGHT	REF SETTING
20 AWG	0.89 ± 0.05 [ .035 ± .002 IN ]	B 1
22 AWG or 0.35mm <sup>2</sup>	0.79 ± 0.05 [ .031 ± .002 IN ]	B 9
24 AWG	0.69 ± 0.05 [ .027 ± .002 IN ]	C 5



- △ RECOMMENDED SPARE PARTS.
- GREASE RAM, CAM, CAM FOLLOWER AND FEED ROD LIGHTLY.
  - CERTAIN TERMINALS REQUIRE LUBRICATION. REFER TO THE APPLICATOR INSTRUCTION SHEET FOR MORE INFORMATION.
  - LUBRICATE DAILY PER THE APPLICATOR INSTRUCTION SHEET SUPPLIED WITH THE APPLICATOR.

**\* WARNING**  
ON INSTALLATION, SET WIRE DISC TO LARGEST WIRE SIZE SETTING. USE OF SETTINGS BELOW MIN. REQUIRED CRIMP HEIGHT SETTING WILL CAUSE DAMAGE TO CRIMP TOOLING.



-77	-76	-72	-71	-6	-2	-1	PART NO	DESCRIPTION	ITEM NO
-	-	-	-	-	-	-	-	-	84
-	-	-	-	-	-	-	-	-	83
-	-	-	-	-	-	-	-	-	82
-	-	-	-	-	-	-	-	-	81
-	-	-	-	-	-	-	-	-	80
-	-	-	-	-	-	-	-	-	79
-	-	-	-	-	-	-	-	-	78
-	-	-	-	-	-	-	-	-	77
-	-	-	-	-	-	-	-	-	76
-	-	-	-	-	-	-	-	-	75
-	-	-	-	-	-	-	-	-	74

REV	DATE	BY	CHK	DESCRIPTION
A	18JAN2007	LJL	MC	SEE ECO-07-001448
B	14FEB2008	MY	GB	ECR-08-003974

REV	DATE	BY	CHK	DESCRIPTION	ITEM NO
-	-	-	-	-	73
-	-	-	-	-	72
-	-	-	-	-	71
-	-	-	-	-	70
-	-	-	-	-	69
-	-	-	-	-	68
-	-	-	-	-	67
-	-	-	-	-	66
-	-	-	-	-	65
-	-	-	-	-	64
-	-	-	-	-	63
-	-	-	-	-	62
-	-	-	-	-	61
-	-	-	-	-	60
-	-	-	-	-	59
-	-	-	-	-	58
-	-	-	-	-	57
-	-	-	-	-	56
-	-	-	-	-	55
-	-	-	-	-	54
-	-	-	-	-	53
-	-	-	-	-	52
-	-	-	-	-	51
-	-	-	-	-	50
-	-	-	-	-	49
-	-	-	-	-	48
-	-	-	-	-	47
-	-	-	-	-	46
-	-	-	-	-	45
-	-	-	-	-	44
-	-	-	-	-	43
-	-	-	-	-	42
-	-	-	-	-	41
-	-	-	-	-	40
-	-	-	-	-	39
-	-	-	-	-	38
-	-	-	-	-	37
-	-	-	-	-	36
-	-	-	-	-	35
-	-	-	-	-	34
-	-	-	-	-	33
-	-	-	-	-	32
-	-	-	-	-	31
-	-	-	-	-	30
-	-	-	-	-	29
-	-	-	-	-	28
-	-	-	-	-	27
-	-	-	-	-	26
-	-	-	-	-	25
-	-	-	-	-	24
-	-	-	-	-	23
-	-	-	-	-	22
-	-	-	-	-	21
-	-	-	-	-	20
-	-	-	-	-	19
-	-	-	-	-	18
-	-	-	-	-	17
-	-	-	-	-	16
-	-	-	-	-	15
-	-	-	-	-	14
-	-	-	-	-	13
-	-	-	-	-	12
-	-	-	-	-	11
-	-	-	-	-	10
-	-	-	-	-	9
-	-	-	-	-	8
-	-	-	-	-	7
-	-	-	-	-	6
-	-	-	-	-	5
-	-	-	-	-	4
-	-	-	-	-	3
-	-	-	-	-	2
-	-	-	-	-	1

DIMENSIONS	TOLERANCES UNLESS OTHERWISE SPECIFIED:	DATE	BY	CHK	DESCRIPTION
mm [IN]	0 PLC ±0.15 1 PLC ±0.25 2 PLC ±0.30 3 PLC ±0.40 4 PLC ±0.50	13DEC2006	M. LLOTHOUSE	MC	FINE ADJUST SIDE FEED HDI APPLICATOR
MATERIAL	FINISH	SCALE	SHEET	OF	REV
-	-	3:5	1	1	B