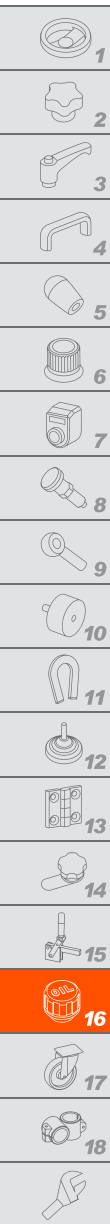


HCY-E Column level indicators

with MIN level electrical sensor, technopolymer



MATERIAL

Transparent polyamide based (PA-T) technopolymer. Highly resistant to shocks, solvents, oils with additives, aliphatic and aromatic hydrocarbons, petrol, naphtha, phosphoric esters.

Avoid contact with alcohol or detergents containing alcohol.

SCREWS

Nickel-plated brass with hexagon socket.

PACKING RINGS

NBR synthetic rubber O-Ring.

FLOAT

Polyamide based (PA) technopolymer in red colour, with a built-in magnetic element to activate the electric contact when the oil level drops to the minimum set at 40mm over the screw axis (dimension I).

SENSOR BRACKET

Watertight, black colour, with a built-in relay (reed).

For a correct assembly see Warnings (see page 1789).

CONNECTOR

Right side output including protection against water sprays (protection class IP 65 according to EN 60529 on page A-18).

CONTRAST SCREEN

White lacquered aluminium. The housing, in the appropriate external rear slot, guarantees the best protection from direct contact with fluid. It can be taken out before assembly to allow the insertion of level lines or words.

STANDARD EXECUTIONS

- **HCY-E-NO**: with electrical contact normally open.
- **HCY-E-NC**: with electrical contact normally closed.

MAXIMUM CONTINUOUS WORKING TEMPERATURE

80°C (with oil).

TECHNICAL DATA

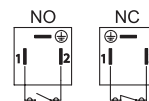
In laboratory tests carried out with mineral oil type CB68 (according to ISO 3498) at 23°C for a limited period of time, the weld stood up to: 14 bar (HCY.76), 9 bar (HCY.127) and 8 bar (HCY.254).

For use with other fluids and under different pressure and temperature conditions, please contact ELESA Technical Department.

In any case we suggest to verify the suitability of the product under the actual working conditions.

SPECIAL EXECUTIONS ON REQUEST

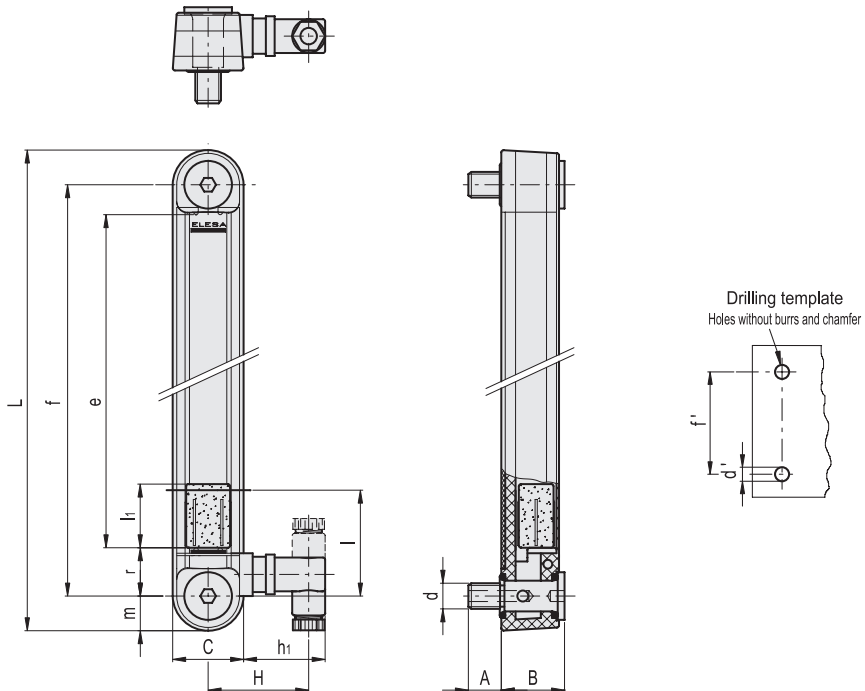
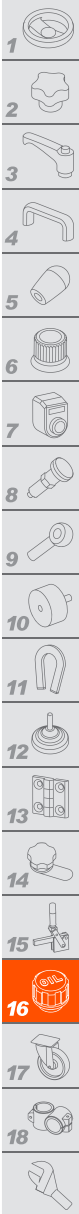
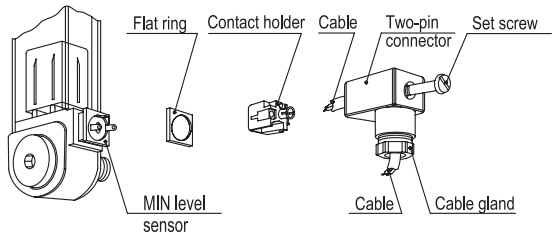
- Column level indicators in different materials (polycarbonate), for use with special fluids and/or at high temperatures.
- AISI 316 stainless steel or nickel-plated brass screws
- Column level indicators with change-over electrical contact.



Electrical features	MIN level sensor
Power supply	AC/DC
Electric contacts	NO normally open NC normally closed
Maximum applicable voltage	NC: 150 Vac, 150 Vdc NO: 230Vac, 230 Vdc
Maximum switching current	NC: 1A NO: 2A
Maximum commutable power	NC: 20 W / 20 V.A. NO: 40 W / 40 V.A.
Cable gland	Pg 7 (for cables in sheath with Ø 6 or 7 mm)
Conductors cross-section	Max. 1.5 mm ²
Do not mount this indicator in proximity to magnetic fields.	

TWO-PIN CONNECTOR ASSEMBLY INSTRUCTIONS

1. Remove the connector from the indicator by unscrewing the set screw placed in the bottom, take the contact holder out and loosen the cable gland.
2. Slip on the two-pole cable into the connector (standard connector) and connect the wires to the terminals nr. 1 and nr. 2 of the contact holder.
3. Assemble by pressing the contact holder into the connector in the required position.
4. Screw the connectors to the indicator and then tighten the cable glands.



Conversion Table	
1 mm = 0.039 inch	
f	
mm	inch
76	2.99
127	5.00
254	10.00

METRIC

Code	Description	f	d	A	B	C	H	L	e	h1	l	l1	m	r	d ^{l-0.2}	f ^{±0.2}	C# [Nm]	⚠
111101	HCY.76-E-NO-M10	76	M10	16	29	32	46	108	41	37	40	17	16	20	10.5	76	10	150
111102	HCY.76-E-NC-M10	76	M10	16	29	32	46	108	41	37	40	17	16	20	10.5	76	10	150
111111	HCY.127-E-NO-M12	127	M12	16	29	32	46	159	93	37	40	29	16	20	12.5	127	10	170
111112	HCY.127-E-NC-M12	127	M12	16	29	32	46	159	93	37	40	29	16	20	12.5	127	10	170
111121	HCY.254-E-NO-M12	254	M12	16	29	32	46	286	219	37	40	29	16	20	12.5	254	10	215
111122	HCY.254-E-NC-M12	254	M12	16	29	32	46	286	219	37	40	29	16	20	12.5	254	10	215

Maximum tightening torque.