

THIS DRAWING IS UNPUBLISHED.
DIFFUSION RESEINTE AMP

RELEASED FOR PUBLICATION

,19 .

© COPYRIGHT 19

BY AMP INCORPORATED. ALL RIGHTS RESERVED.

LOC F DIST 10

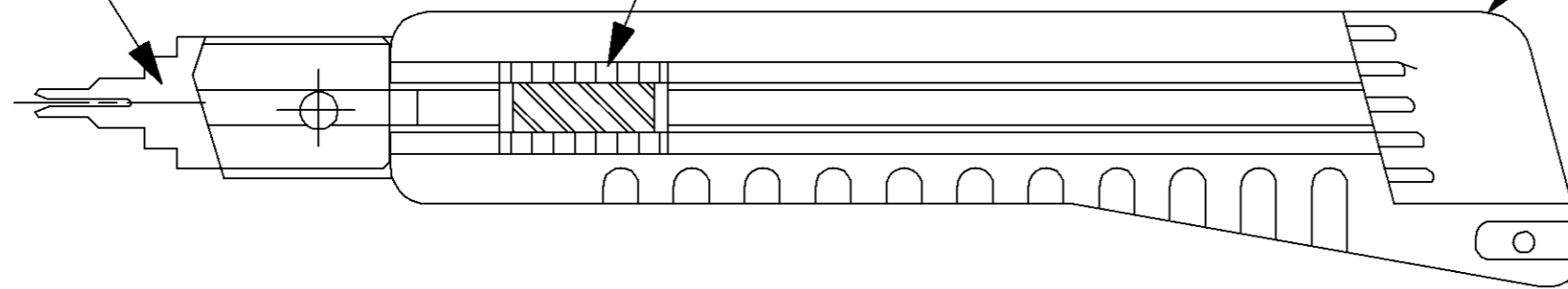
REVISIONS

P	LTR	DESCRIPTION MODIFICATIONS	DATE	DWN	APVD
0		PRELIMINAIRE	12/05/98	CK	-
A		MODIFIE PAR ER00-7642-98	29-SEP-98	.CK	

LAME D'EXTRACTION

CURSEUR DE VERROUILLAGE

MANCHE DE CUTTER



OUTIL D'EXTRACTION POUR CONTACT SICMA

THIS DRAWING IS A CONTROLLED DOCUMENT.

DWN 12-MAY-98
Christian KNOEPFLE

CHK 19-OCT-98
C. KNOEPFLE

APVD 19-OCT-98
P. RANSON

PRODUCT SPEC

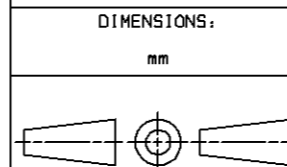
APPLICATION SPEC

WEIGHT -

AMP AMP DE FRANCE
95301 PONTOISE

NAME
OUTIL EXTRACTEUR SICMA II

SIZE	CAGE CODE	DRAWING NO	RESTRICTED TO
A3	00779	C-951769	-



MATERIAL -

DIMENSIONS:		TOLERANCES UNLESS OTHERWISE SPECIFIED:	
mm			
0 PLC	±-		
1 PLC	±-		
2 PLC	±-		
3 PLC	±-		
4 PLC	±-		
ANGLES	±-		
FINISH	-		

CUSTOMER DRAWING/PLAN CLIENT	UNIQUEMENT POUR REFERENCE	SCALE 1:1	SHEET 1 OF 1	REV A
------------------------------	---------------------------	-----------	--------------	-------