



ANATECH ELECTRONICS, INC.

Manufacturer of RF & Microwave Filters and Products



3.5 GHz Duplexer

Part Number: AD3487-3587D290

Antenna to Receive Specifications:

Rx Center Frequency (RxFc): 3487.5 MHz

Passband Bandwidth: 25 MHz (minimum)

Insertion Loss: < 1.0 dB

Ripple: Total passband amplitude variation including ripple, roll-off and slope should be less than 0.5 dB over the passband

Return Loss: >15 dB

Group Delay Variation: < 60 ns across any 1.75 MHz within the operating band.

Minimum Attenuation Required

Freq (MHz)	Atten (dB)
< 2500:	40
(RxFc ± 12.5) - 121	35
(RxFc ± 12.5) - 484:	50
(RxFc ± 12.5) +100:	50
> 4 GHz & < 10.5 GHz:	40

Transmit to Antenna Specifications:

Tx Center Frequency (TxFc): 3587.5 MHz

Passband Bandwidth: 25 MHz (minimum)

Insertion Loss: <1.5 dB

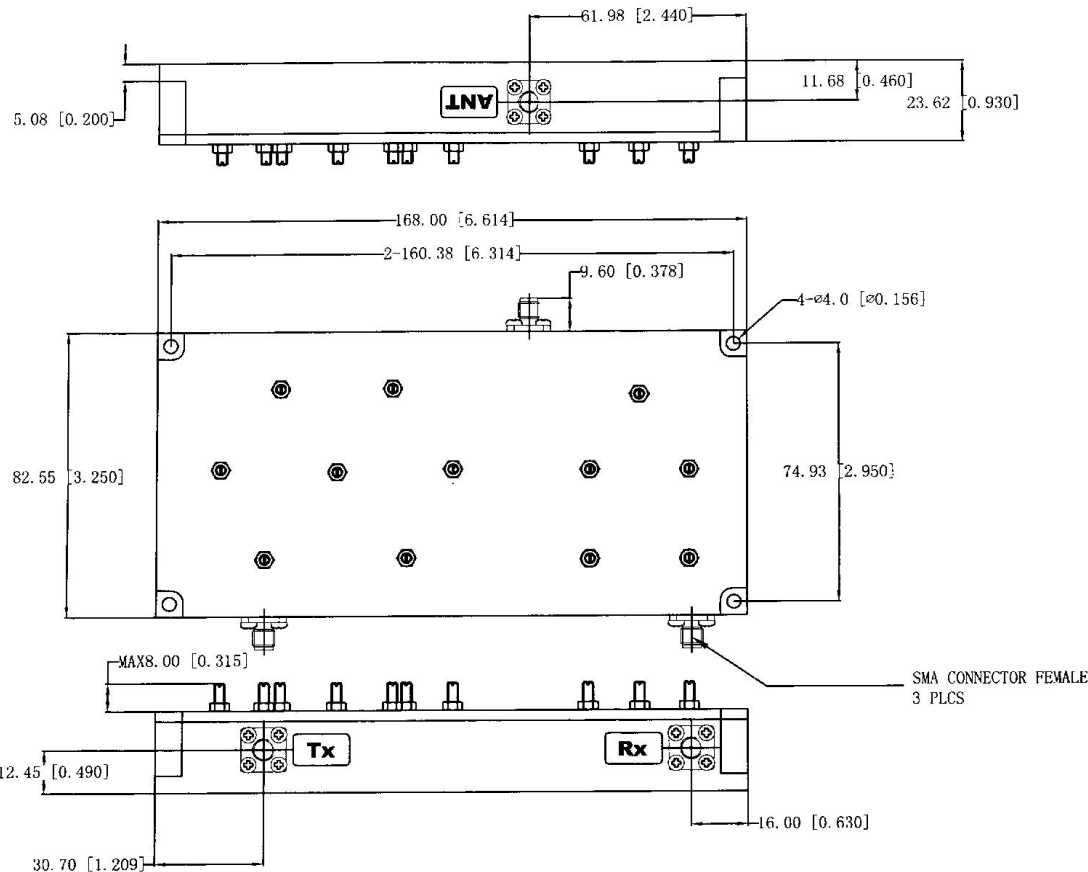
Ripple: Total passband amplitude variation including ripple, roll-off and slope should be less than 0.5 dB over the passband.

Return Loss: >15 dB

Group Delay Variation: < 60 ns across any 1.75 MHz within the operating band.

Minimum Attenuation Required

Freq (MHz)	Atten (dB)
< 2500:	40
< TxFc -23 & > TxFc +23 at 25 °C:	15
< TxFc -28 & > TxFc +28:	15
(TxFc -/+ 12.5) - 240:	50
(TxFc -/+ 12.5) - 480:	50
(TxFc -/+ 12.5) - 100:	80
> 4GHz & < 18 GHz:	40



ANATECH ELECTRONICS INC. 70 Outwater Lane, Garfield, NJ 07026 Tel: (973) 772-4242 Fax: (973) 772-4646

E-Mail: sales@anatechelectronics.com Website: www.anatechelectronics.com



Our Webstore
www.amcrf.com