



RONDA – System for all architectural lighting needs

RONDA is part of LEDiL's platform of modular light engines with very wide customization possibilities. Supporting different base sockets and numerous front panel fastening methods it can be adapted to a wide range of applications with a personal touch. Whether being used in museums, offices or for architectural purposes the same modular solution allows usage with different beam patterns as well. With LEDiL's RONDA you have the flexibility you need to make your LED lighting designs easier and more versatile.

FEATURES

- Asymmetric and double asymmetric wall washing beams meeting even strictest vertical illuminance requirements
- No shadows, uniform light up to the ceiling level without any tilting of the fixture needed
- Wide customization possibilities (front panel, assembly depth, light pattern)
- Low profile design for shallow depth installations
- Typical installation ratio 1:3 with asymmetric beams
- Accessories available by request (black shade available for double asymmetric version)
- ZT45-version for corridors, aisles and vertical surface illumination

COMPATIBILITY

- Compatible with LES sizes up to 14 mm

TYPICAL APPLICATIONS

- Office lighting
- Architectural lighting
- Downlights
- Museums
- Shops
- Hotels



FN15380_RONDA-WAS



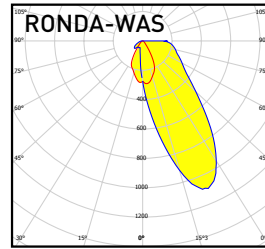
FN15387_RONDA-WW



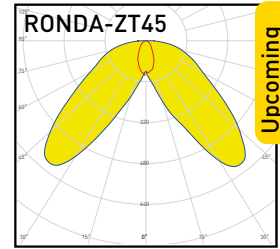
FN15381_RONDA-WWW

TECHNICAL SPECIFICATIONS

Diameter: 70 mm
Height: 22,3 mm

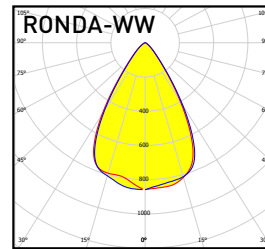


Typ. FWHM: Asymmetric
Typ. efficiency: 95%

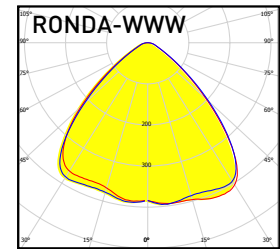


Typ. FWHM: Double asymm.
Typ. efficiency: 85%

Upcoming



Typ. FWHM: 56°
Typ. efficiency: 87%

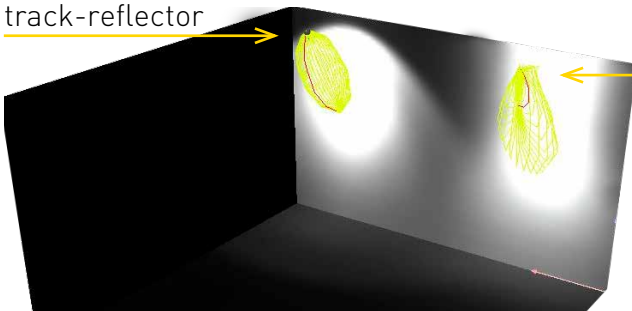


Typ. FWHM: 83°
Typ. efficiency: 85%

DESIGN EXAMPLE

TILTED STANDARD TRACK REFLECTOR COMPARISON TO RONDA-WAS

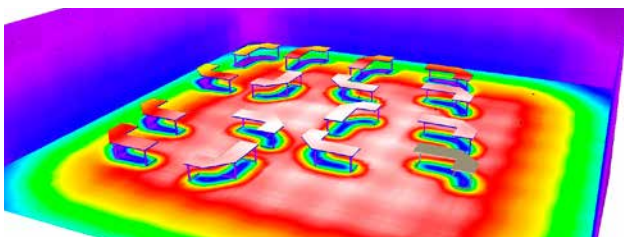
Tilted standard track-reflector



FCN15209_RONDA-WAS

- Smooth beam edge, no halos
- No dark area on roof top
- Competent cd/lm for deep vertical illuminance
- Designed for 1:3 assembly ratio

RONDA-WW



- Calculation surface on desk area
- Mounting height 5 m
- Distance between luminaries 2 m
- Room size 20x20 m
- Luminous Flux 2020 lm
- E_{av} 492 lx
- E_{min} 484 lx
- E_{max} 504 lx
- $u0$ 0,98

ORDERING INFORMATION

Consult www.ledil.com/ronda for ordering codes and latest product specifications, which may vary by LED