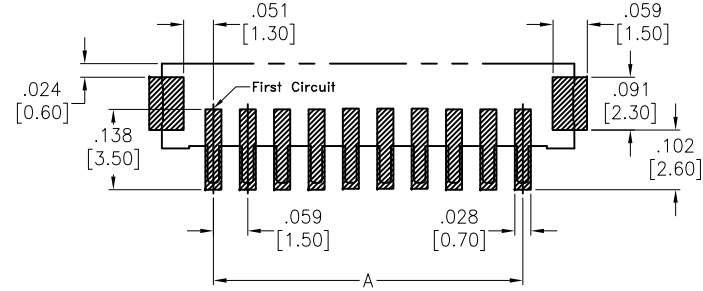
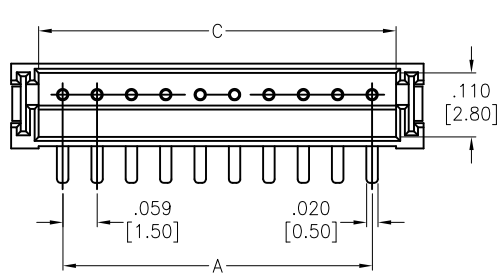
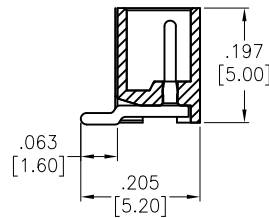
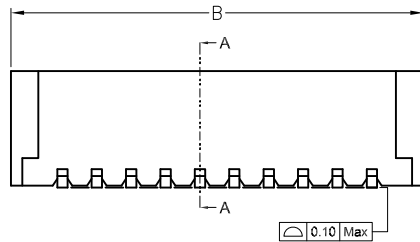


APPROVED: \_\_\_\_\_  
 DATE: \_\_\_\_\_ TITLE: \_\_\_\_\_

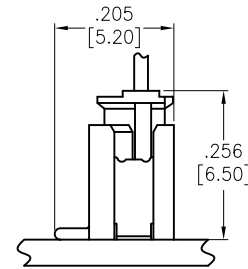
Rev	AWO #	Description	Date	Appr
-		RELEASED	10/24/17	
A		UPDATED DRAWING	11/20/17	HR/IC



RECOMMENDED PCB LAYOUT



SECTION A-A



ASSEMBLY VIEW

**SPECIFICATIONS:**

Material:  
 Insulator: Hi-temp thermoplastic, rated UL 94V-0  
 Insulator color: Natural  
 Contacts: Brass

**Plating:**  
 Tin over Nickel underplate overall

**Electrical:**  
 Voltage rating: 50 AC/DC  
 Current rating: 1 AC/DC  
 Contact resistance: 20 mohms max  
 Insulation resistance: 500 Mohms min  
 Dielectric withstanding voltage: 500 VAC for 1 minute

**Temperature Rating:**  
 -25°C to +85°C

Environmental:  
 Lead free, RoHS compliant.



PACKAGED ON TAPE & REEL

Positions: 02 thru 15  
 A = .059 [1.50] X No. of Spaces  
 B = .059 [1.50] X No. of Positions + .118 [3.00]  
 C = .059 [1.50] X No. of Positions + .024 [0.60]

UNLESS OTHERWISE SPECIFIED ALL DIMENSIONS ARE INCHES [MM] TOLERANCES: EXCEPT AS NOTED		<b>ADAM TECH</b> 909 Rahway Avenue, Union, NJ 07083 Phone: 908-687-5000 Fax: 908-687-5710	
INCHES HOLES			
.X ± .10	Ø.X ± .10	TITLE .059 [1.50] TOP ENTRY TYPE, SMT TYPE	
.XX ± .020	Ø.XX ± .015		
.XXX ± .015	Ø.XXX ± .010		
APPROVALS		DATE	
DRAWN AY		10/24/17	
CHECKED CC		10/24/17	
APPROVED			
SIZE X	PART NO. 15SH-A-XX-TS-SMT-T/R	REV. A	
REF: S00124T	SCALE: NTS	SHEET 1 OF 1	