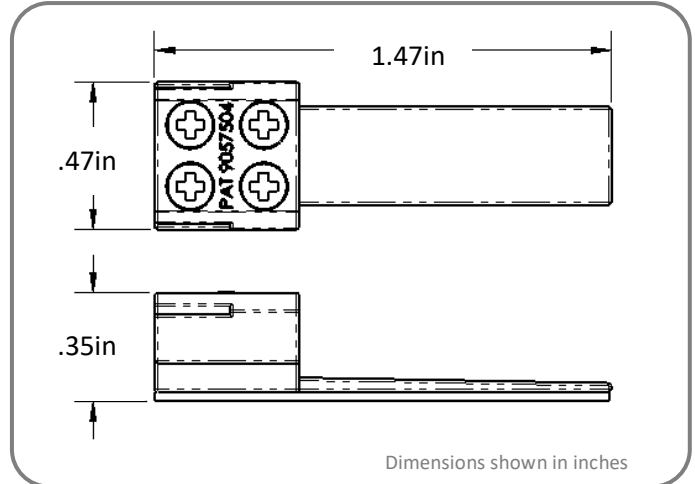


# inspired LED *iDea Series Screw Terminal Tiger Paw LED Connector*<sup>®</sup>

Inspired LED's patented solderless **iDea Series Screw Terminal Tiger Paw LED Connectors**<sup>®</sup> are the perfect solution for in-field LED system design and customization. These innovative accessories pair with 8mm LED flex strips for quick, convenient installation. Now, creating the perfect low-voltage lighting system is easier than ever, thanks to Inspired LED! Fits well with Idea Series aluminum and lenses.

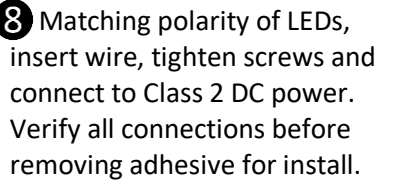
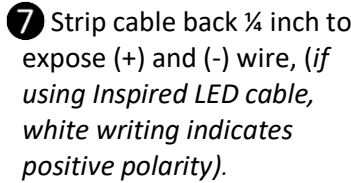
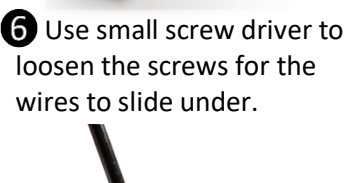
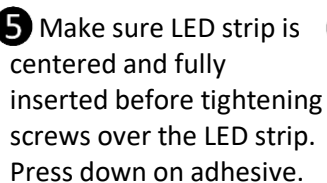
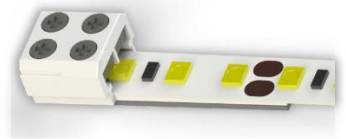
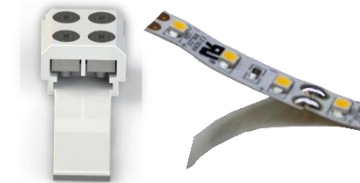


## Product Specifications: (SKU# 8464)

- Solderless termination for 8mm LED flex strips to 18-22 AWG solid wire
- Max Load- 5 AMPs
- Net Weight- 4g
- VHB adhesive backing included
- Industry proven locking system meets shock and vibration requirements for IEC 60068-2-27
- U.S. Patent No. 9,057,504

## Instructions:

- 1 Use scissors to cut LED strip to length along the copper solder pads ONLY (located every 3 LEDs).
- 2 Use small screw driver to loosen the screws for the LED strip to slide under.
- 3 Peel back adhesive lining on LED strip about ½ inch.
- 4 Taking note of (+) polarity of LEDs, insert flex strip into gap between the screw and the connector.
- 5 Make sure LED strip is centered and fully inserted before tightening screws over the LED strip. Press down on adhesive.
- 6 Use small screw driver to loosen the screws for the wires to slide under.
- 7 Strip cable back ¼ inch to expose (+) and (-) wire, (if using Inspired LED cable, white writing indicates positive polarity).
- 8 Matching polarity of LEDs, insert wire, tighten screws and connect to Class 2 DC power. Verify all connections before removing adhesive for install.



**Troubleshooting:** If LEDs are flickering, double check connection to be sure flex is fully inserted and secured, if no lights turn on check to be sure polarities are properly matched. Connector must maintain secure contact to avoid overheating.

