

TECHNICAL DATA

Fluke DS701 and DS703 FC High Resolution Diagnostic Videoscopes



SUPERIOR IMAGE QUALITY

HIGH RESOLUTION

DS701

800 x 600 (480,000 pixels)

DS703 FC High Resolution

1200 x 720 (864,000 pixels)

DIAGNOSTIC VIDEOSCOPE

Dual view camera

Adjustable light

Auto zoom



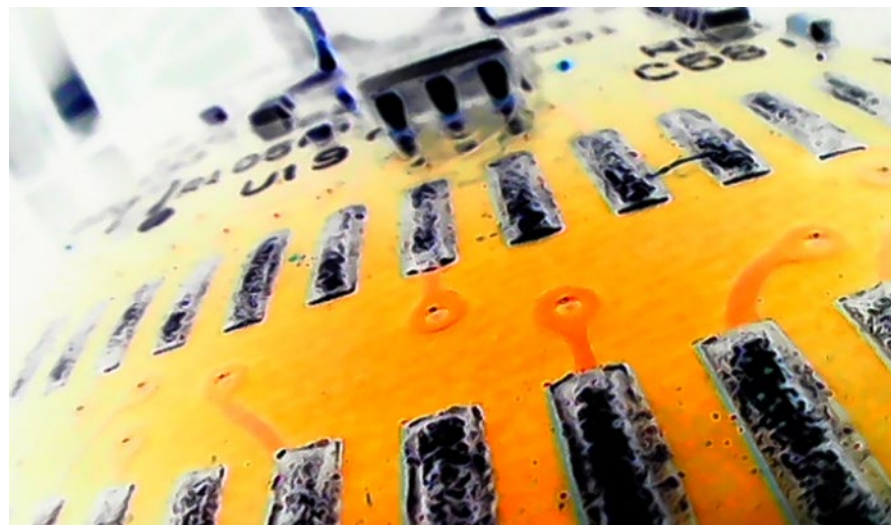
Fluke Connect™ compatible

Gritty, industrial, expensive equipment? Diagnose before tear-down with the durability of Fluke

The benefits of a videoscope are well known. But Industrial inspections require a powerful diagnostic videoscope designed to stand up to the dirtiest, most harsh environments.

Fluke Diagnostic Videoscopes put high-resolution images in the palm of your hand.

- High definition probe with dual-view camera
- Processing speeds that render a smooth, clear, consistent image
- 7" LCD screen for easy viewing
- Macro to micro zoom function
- Adjustable lighting to capture the best image
- True 720p video

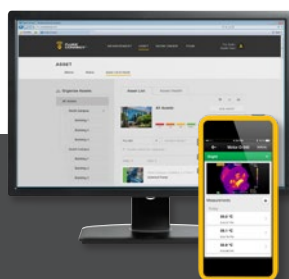


Detailed specifications

| | DS701 | DS703 FC |
|------------------------------|--|--|
| Videoscope probe | | |
| Length | 1.2 meter (3.94 feet) | |
| Type | Detachable, semi-rigid, waterproof, immersible to 1 meter or more in depth | |
| Diameter | 8.5 mm (0.33 inches), optional 3.8, 5.5 and 9 mm probes available | |
| Material | Elastomer coated steel | |
| Lighting | Adjustable LED, one front, one side | |
| Illumination | 53 Lux | |
| UpisUp™ technology | Appropriate image display, regardless of the orientation of the probe, 8.5 MM, 1.2 M probe only | |
| Camera | | |
| | Dual view camera, forward and side | |
| Resolution | 800 x 600 (480,000 pixels) | 1200 x 720 (864,000 pixels) |
| Still image format | JPG | |
| Video recording format | AVI | |
| Video output format | MPEG compression | |
| Digital zoom | Adjustable from 1x to 8x zoom | |
| Field of view | 68° | |
| Depth of field | 25 mm to infinity | |
| Video resolution | Standard | 720p |
| Minimum focus distance | 10 mm | |
| Focus type | Fixed | |
| Rotation | 180° | |
| Streaming video | Via HDMI and Fluke Connect™ | |
| LCD screen | | |
| Touch screen | Capacitive touch screen | |
| Size | 7 inch (17.79 cm) | |
| Refresh rate | 30 hz | |
| UpisUp™ technology | Real-time upright adjustment for image | |
| LED backlight | Adjust display brightness for optimal viewing | |
| Communication | | |
| Wireless interface | | WiFi 802.11b/g/n, Range: 33 feet (10.06 meters) |
| Data transfer | USB | USB and micro HDMI cable |
| Fluke Connect™* | | Save and share images directly from the diagnostic scope. Attach images or video to an asset record or work order. |
| Instant upload to the cloud | | Yes, with Fluke Connect™ |
| General features | | |
| Color palettes | Visible light, grayscale or inverted | |
| Internal memory | 6 GB | |
| Physical buttons | Intuitive, easy to navigate button technology, 4 functional keys, 4 navigational, one capture or select button | |
| Carrying case | Protective EVA case | |
| Strap | Hand strap | Hand strap and neck strap |
| Power adapter | AC adapter/battery charger input | |
| Battery | 6400mAh 3.7 volt rechargeable internal li-ion battery | |
| Battery life | 3 hours at 50 % LED brightness | |
| Dimensions | 6.98 x 8.85 inches (17.73 x 22.48 cm) | |
| Weight | 1.95 lbs (0.88 Kg) | |
| IP rating | | |
| Tablet | IP54, dust protected and protected against water projected from a nozzle | |
| Probe | IP68, dust tight and immersion of 1 meter or more depth | |
| Drop test | 2 meter (6.56 feet) | |
| Operating temperature | 0 °C to 45 °C (32 °F to 104 °F), 50 °C (113 °F) for less than 10 minutes | |
| Storage temperature | -40 °C to 60 °C (-40 °F to 140 °F) | |
| Operating humidity | 90 % at 35 °C (95 °F) 75 % at 40 °C (104 °F) 45 % at 50 °C (122 °F) | |
| Warranty | 2 years | |

*Fluke Connect™ app and Fluke Connect™ products not available in all countries.

Fluke Connect™ functionality will be available for the DS703 FS Videoscope soon. This powerful software will allow you to save and share high-resolution images with your team. Watch the Fluke website for this firmware update and add the power of Fluke Connect to your DS703 FC Videoscope.



Preventive maintenance simplified. Rework eliminated.

Save time and improve the reliability of your maintenance data by wirelessly syncing measurements using the Fluke Connect™ system.

- Eliminate data-entry errors by saving measurements directly from the tool and associating them with the work order, report or asset record
- Maximize uptime and make confident maintenance decisions with data you can trust and trace.
- Access baseline, historical and current measurements by asset

The Fluke DS703 FC is part of a growing system of connected test tools and equipment maintenance software.

Visit www.flukeconnect.com to learn more about the Fluke Connect™ system.



Ordering information

FLK-DS701 Diagnostic Videoscope
FLK-DS703 FC High Resolution Diagnostic Videoscope

What's included

Diagnostic videoscope with 1.2m, 8.5mm semi-rigid probe, hand strap (DS703 FC includes hand and neck strap), USB cable, AC power supply/battery charger, TPAK magnetic hanger, protective EVA case

Optional accessories

- FLK-3.8MM Scope** 1M probe, forward view
- FLK-8.5MM Scope** 3M probe, dual view
- FLK-5.5MM Scope** 1M probe, dual view
- FLK-8.5MM Scope** 1.2M probe, dual view
- FLK-8.5MM UV Scope** 1M probe, dual view
- Fluke FLK-9MM Scope** forward view, 20m probe reel
- Fluke DS 7XX Neckstrap**

Visit your local Fluke website or contact your local Fluke representative for more information.



All trademarks are the property of their respective owners. WiFi or cellular service required to share data. Smartphone, wireless service and data plan not included with purchase. First 5 GB of storage is free. Phone support details can be viewed at fluke.com/phones.

Smart phone wireless service and data plan not included with purchase. Fluke Connect is not available in all countries.

Fluke. *Keeping your world up and running.*

Fluke Corporation
 PO Box 9090, Everett, WA 98206 U.S.A.
Fluke Europe B.V.
 PO Box 1186, 5602 BD
 Eindhoven, The Netherlands

Modification of this document is not permitted without written permission from Fluke Corporation.

For more information call:
 In the U.S.A. (800) 443-5853 or
 Fax (425) 446-5116
 In Europe/M-East/Africa +31 (0)40 267 5100 or
 Fax +31 (0)40 267 5222
 In Canada (800)-36-FLUKE or
 Fax (905) 890-6866
 From other countries +1 (425) 446-5500 or
 Fax +1 (425) 446-5116
 Web access: <http://www.fluke.com>

©2018 Fluke Corporation.
 Specifications subject to change without notice.
 8/2018 6010402h-en