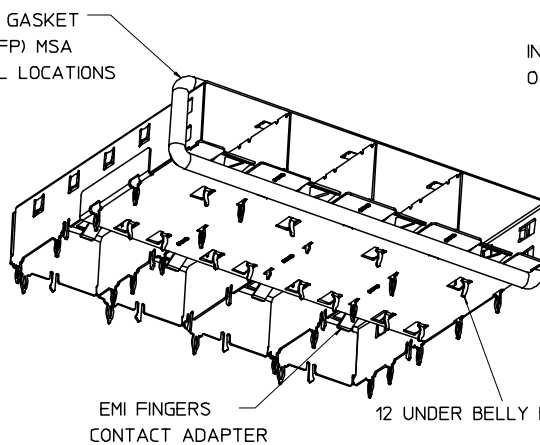


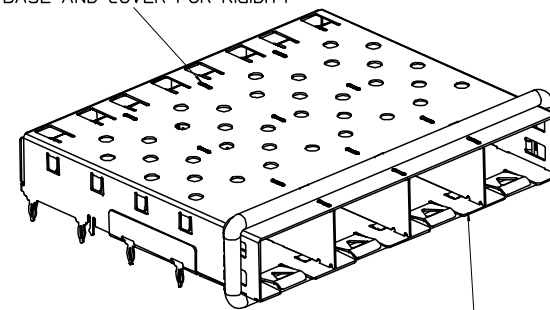
360° ELASTOMER GASKET
COMPLIES WITH (SFP) MSA
BOARD AND BEZEL LOCATIONS



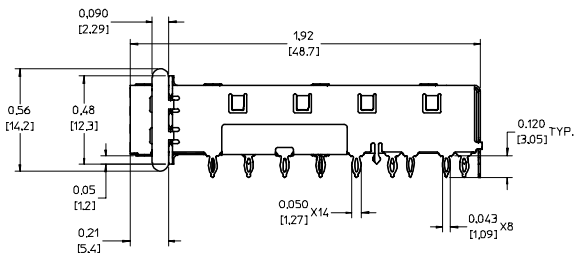
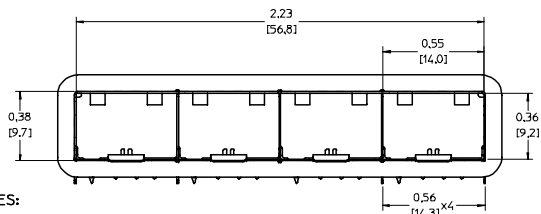
EMI FINGERS
CONTACT ADAPTER

12 UNDER BELLY EMI PINS

INNER WALL TABS ARE COINED
OVER BASE AND COVER FOR RIGIDITY



DIMENSIONS OF EACH INNER CAGE DESIGNED
TO FUNCTION WITH SMALL FORM-FACTOR
PLUGGABLE (SFP) TRANSCEIVER



NOTES:

- PRESS FIT LEGS 0.120" LONG-
0.062 [1.57] MINIMUM PCB THICKNESS FOR SINGLE SIDED USE.
0.118 [3.00] MINIMUM PCB THICKNESS FOR BELLY TO BELLY USE.

- MATERIAL: COPPER ALLOY
PLATING: NONE

NOTE: A PRE-PLATED NICKEL VERSION IS AVAILABLE.
REFER TO DOCUMENT SD-74728-420

3. REFERENCE DOCUMENTS:

PRODUCT SPECIFICATION: PS-74728-000
COSMETIC SPECIFICATIONS: WI-HP-7-2774 AND WI-HPA-7-0093
TEST SUMMARY: TS-74728-0415

- MATES WITH SERIES 74728, LIGHT PIPE COVER ASSEMBLY.

- THIS PART MEETS THE RESTRICTION OF HAZARDOUS SUBSTANCES IN
ELECTRICAL AND ELECTRONIC EQUIPMENT (ROHS) DIRECTIVE (2002/95/EC).

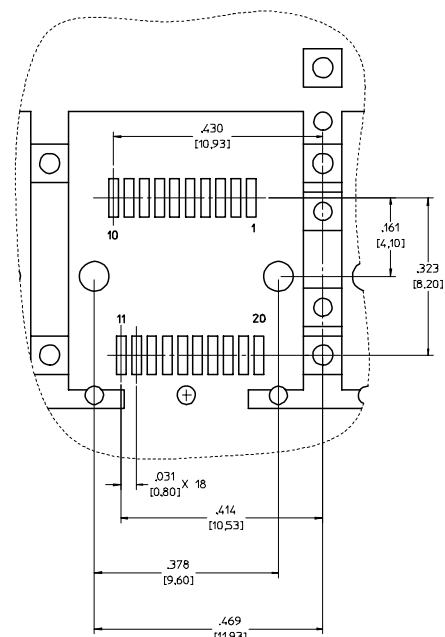
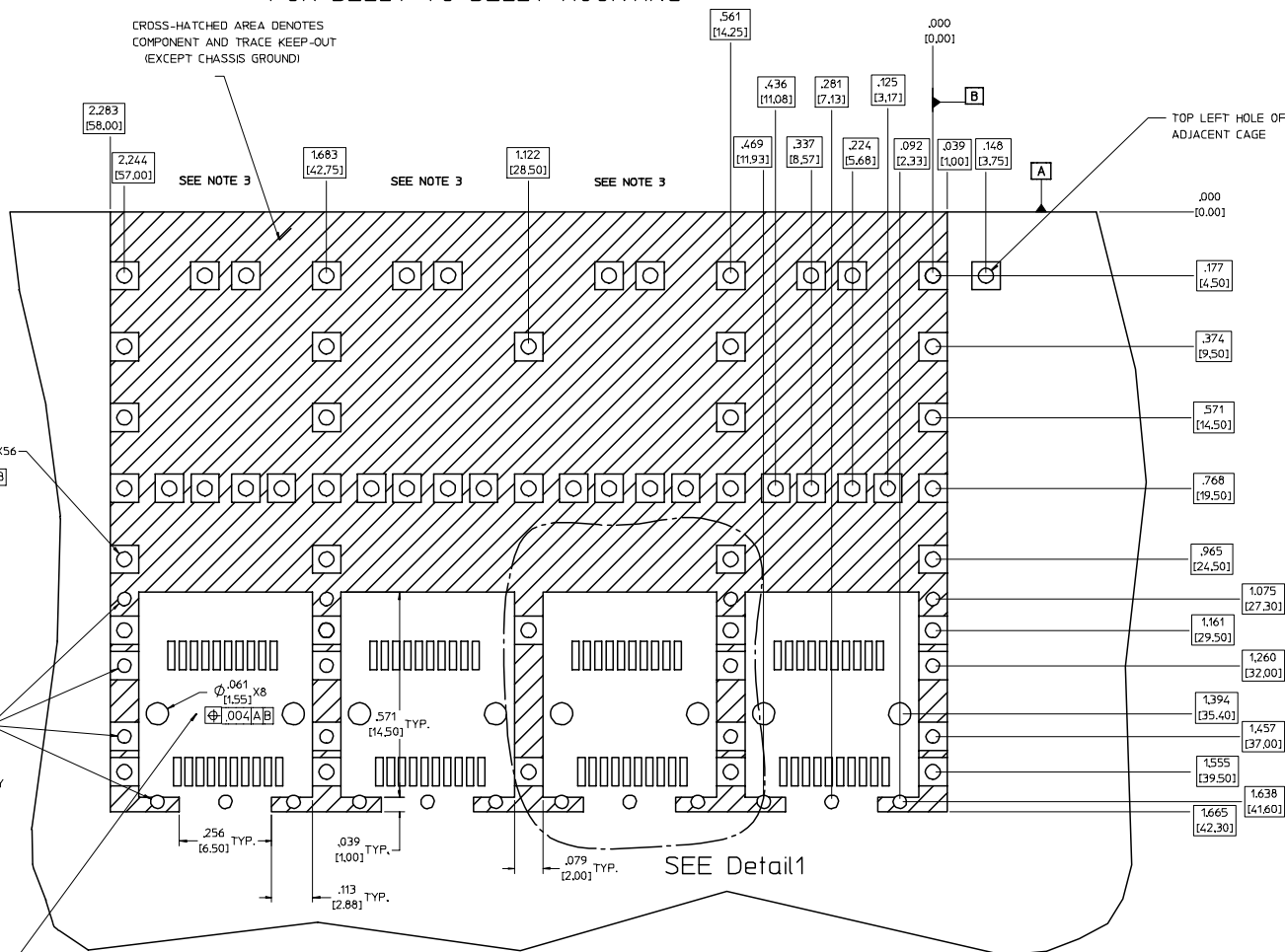
EC NO: USY2006-0225 DRW:KSIMONSO06/01/24 CHKD:BRUSSELL2006/01/24 APPR:BRUSSELL2006/01/25	QUALITY SYMBOLS	GENERAL TOLERANCES (UNLESS SPECIFIED)	SCALE 3:1	DESIGN UNITS METRIC	THIRD ANGLE PROJECTION	REVISE ON CAD ONLY
	0.0 0.0	4 PLACES ± --- ± --- 3 PLACES ± --- ± .005 2 PLACES ± 0.13 ± .01 1 PLACE ± 0.25 ± ---	DIMENSION STYLE IN/MM DRAWN BY DATE KSIMONSO 2004/10/09 CHECKED BY DATE BRUSSELL 2004/10/09 APPROVED BY DATE BRUSSELL 2004/10/09	TITLE 1X4 SFP GANGED CAGE ASSY W/ 0.090 GASKET, PRESS FIT, F/ LIGHT PIPE		
		DRAFT WHERE APPLICABLE MUST REMAIN WITHIN DIMENSIONS		MOLEX INCORPORATED MATERIAL NO. 747280411 DOCUMENT NO. SD-74728-411 SHEET NO. 1 OF 5		
		THIS DRAWING CONTAINS INFORMATION THAT IS PROPRIETARY TO MOLEX INCORPORATED AND SHOULD NOT BE USED WITHOUT WRITTEN PERMISSION				

20 19 18 17 16 15 14 13 12 11 10 9 8 7 6 5 4 3 2 1

PCB LAYOUT FOR BELLY TO BELLY MOUNTING

CROSS-HATCHED AREA DENOTES
COMPONENT AND TRACE KEEP-OUT
(EXCEPT CHASSIS GROUND)

HOST CONNECTOR DETAIL



Detail1
SCALE 8:1

$\varnothing .041 \pm .002$
 (1.05 ± 0.05)
X56
[.004] [A/B]

$\varnothing .037 \pm .002$
 (0.95 ± 0.05)
X24
[.004] [A/B]
SMALLER HOLE ON
THESE FOUR ROWS ONLY

THIS AREA DENOTES
COMPONENT KEEP-OUT
(TRACES ALLOWED)

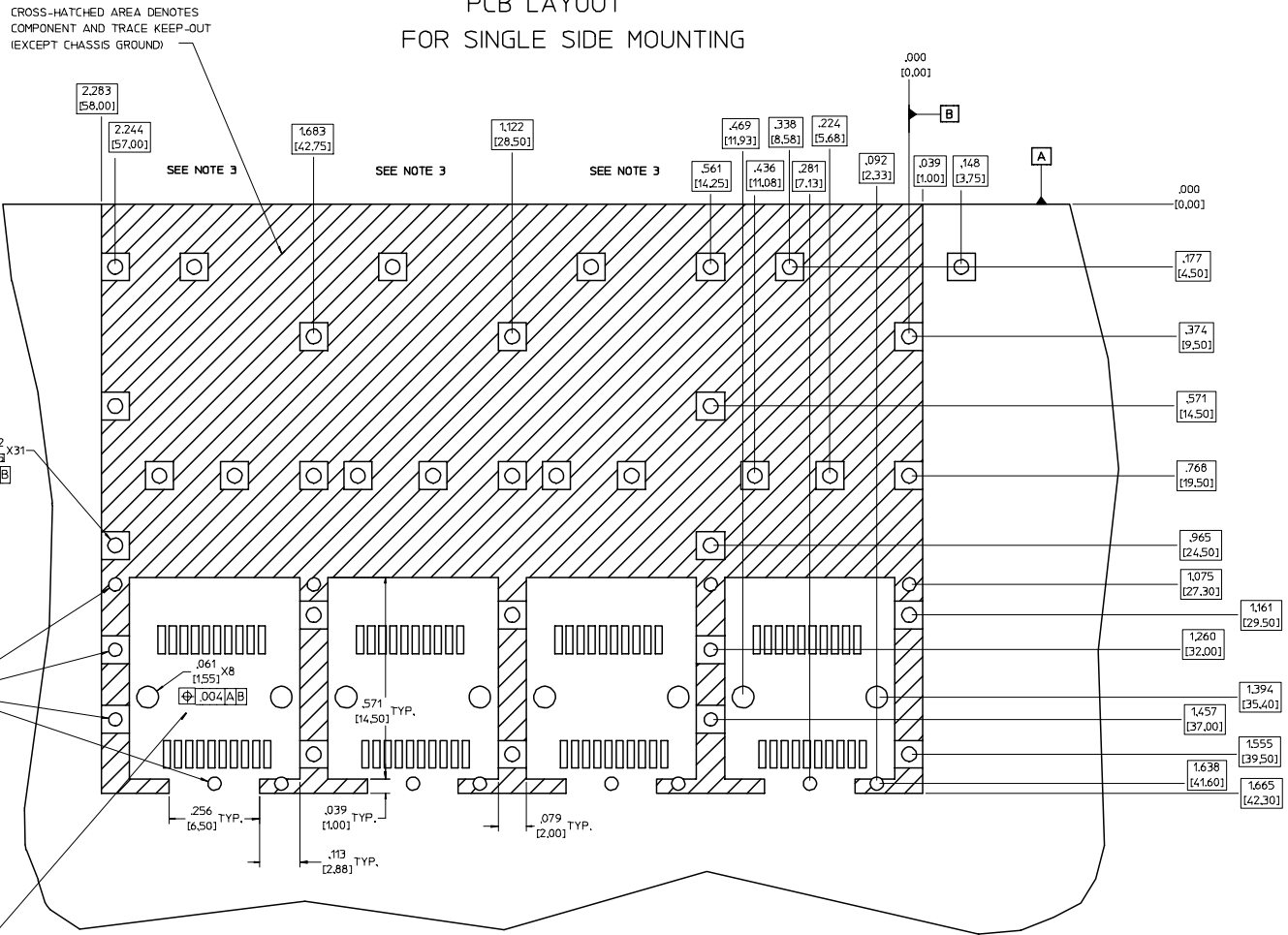
- NOTES:
- PADS AND VIAS GO TO CHASSIS GROUND. (64 PLACES). RECOMMENDED PADS TO BE 2mm SQUARE
 - PLATING OPTIONAL FOR THROUGH HOLES. (16 PLACES).
 - RECOMMENDED PLATING INCLUDES HASL, IMMERSION (GOLD, SILVER, OR TIN), AND OSP.
 - HOLE PATTERN REPEATS FOR EACH PORT. SPACING BETWEEN PORTS IS 5.61 [14.25]

SEE Detail1

EC NO: USY2006-0225 DRW:KSIMONSON006/01/24 CHK:D.BRUSSELL2006/01/24 APPR:R.BRUSSELL2006/01/25 REV DESCRIPTION	QUALITY SYMBOLS	GENERAL TOLERANCES (UNLESS SPECIFIED)	SCALE 6:1	DESIGN UNITS METRIC	THIRD ANGLE PROJECTION	REVISE ON CAD ONLY	
	$\nabla .0$ $\nabla \epsilon .0$	DIMENSION STYLE IN/MM 4 PLACES ± --- ± --- 3 PLACES ± --- ± .005 2 PLACES ± 0.13 ± .01 1 PLACE ± 0.25 ± --- ANGULAR ± 1 °	DRAWN BY DATE K SIMONSON 2004/10/09	CHECKED BY DATE R BRUSSELL 2004/10/09	APPROVED BY DATE R BRUSSELL 2004/10/09	TITLE 1X4 SFP GANGED CAGE ASSY W/ 0.090 GASKET, PRESS FIT, F/ LIGHT PIPE MOLEX INCORPORATED	
	DRAFT WHERE APPLICABLE MUST REMAIN WITHIN DIMENSIONS		MATERIAL NO. 747280411		DOCUMENT NO. SD-74728-411	SHEET NO. 2 OF 5	
	THIS DRAWING CONTAINS INFORMATION THAT IS PROPRIETARY TO MOLEX INCORPORATED AND SHOULD NOT BE USED WITHOUT WRITTEN PERMISSION						

19 18 17 16 15 14 13 12 11 10 9 8 7 6 5 4 3 2 1

PCB LAYOUT FOR SINGLE SIDE MOUNTING



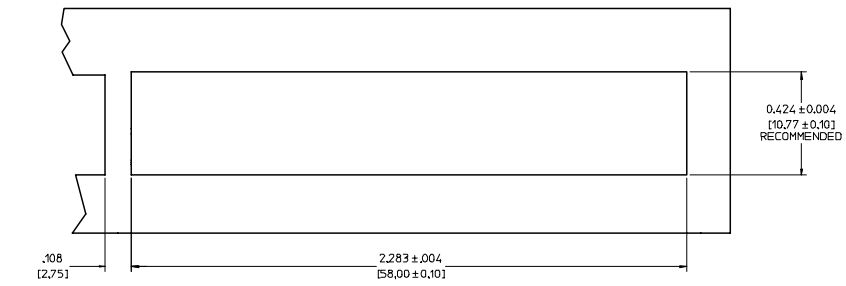
- NOTES:**
- PADS AND VIAS GO TO CHASSIS GROUND. (34 PLACES). RECOMMENDED PADS TO BE 2mm SQUARE
 - PLATING OPTIONAL FOR THROUGH HOLES. (12 PLACES).
 - RECOMMENDED PLATING INCLUDES HASL, IMMERSION (GOLD, SILVER, OR TIN), AND OSP.
 - HOLE PATTERN REPEATS FOR EACH PORT. SPACING BETWEEN PORTS IS 5.61 [14.25]

EC NO: USY2006-0225 DRW:K.SIMONSON06/01/24 CHK:D.BRUSSELL2006/01/24 APPR:R.BRUSSELL2006/01/25 REV:	QUALITY SYMBOLS	GENERAL TOLERANCES (UNLESS SPECIFIED)	SCALE 6:1	DESIGN UNITS METRIC	THIRD ANGLE PROJECTION	REVISE ON CAD ONLY	
	0.0 0.1	4 PLACES ± --- ± --- 3 PLACES ± --- ± .005 2 PLACES ± 0.13 ± .01 1 PLACE ± 0.25 ± --- ANGULAR ± 1°	DIMENSION STYLE IN/MM DRAWN BY K.SIMONSON DATE 2004/10/09 CHECKED BY BRUSSELL DATE 2004/10/09 APPROVED BY BRUSSELL DATE 2004/10/09	TITLE 1X4 SFP GANGED CAGE ASSY W/ 0.090 GASKET, PRESS FIT, F/ LIGHT PIPE MOLEX INCORPORATED MATERIAL NO. 747280411 DOCUMENT NO. SD-74728-411 SHEET NO. 3 OF 5			
	DRAFT WHERE APPLICABLE MUST REMAIN WITHIN DIMENSIONS		THIS DRAWING CONTAINS INFORMATION THAT IS PROPRIETARY TO MOLEX INCORPORATED AND SHOULD NOT BE USED WITHOUT WRITTEN PERMISSION				

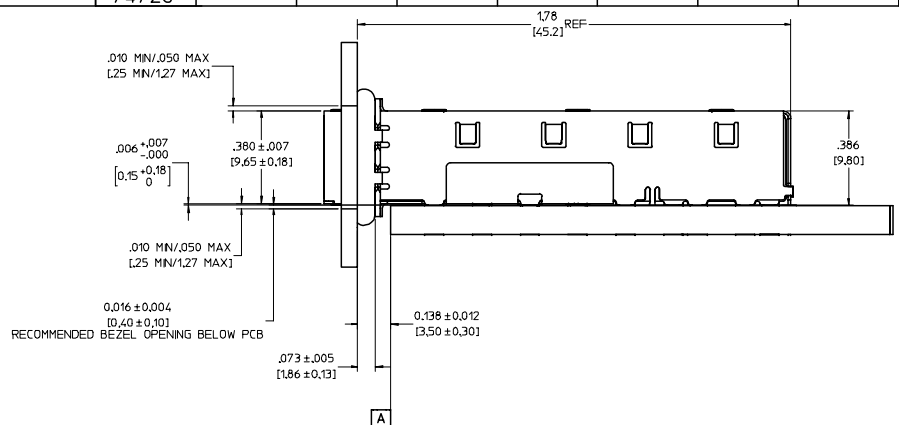
20 19 18 17 16 15 14 13 12 11 74728 9 8 7 6 5 4 3 2 1

L
K
J
I
H
G
F
E
D
C
B
A

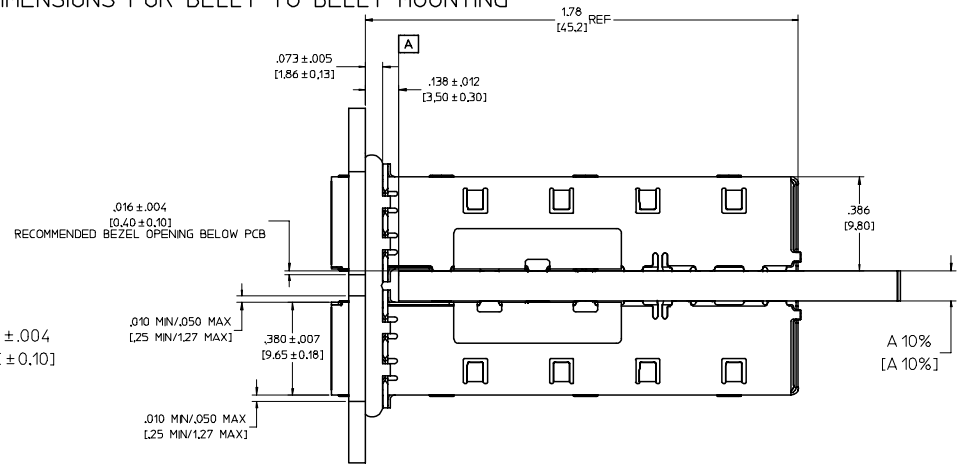
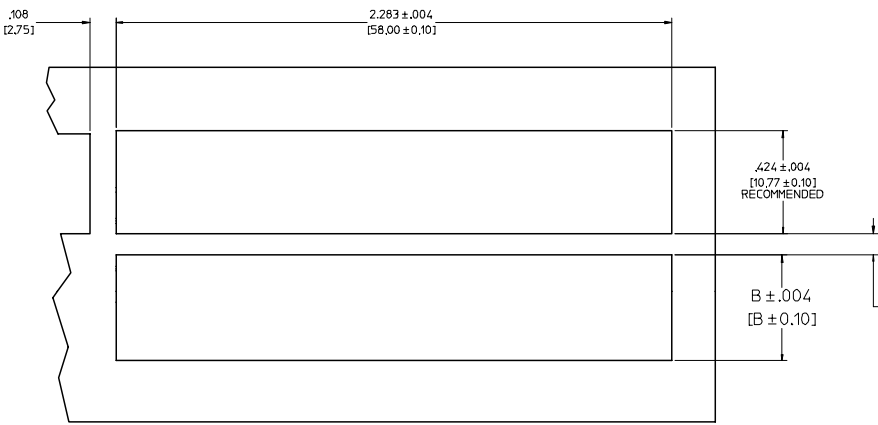
L
K
J
I
H
G
F
E
D
C
B
A



BEZEL AND BOARD POSITION DIMENSIONS FOR SINGLE SIDE MOUNTING



BEZEL AND BOARD POSITION DIMENSIONS FOR BELLY TO BELLY MOUNTING



NOTE: FOR A GIVEN BOARD THICKNESS (A), DIMENSIONS (B) AND (C) ARE DIRECTLY AFFECTED.
 USE RECOMMENDED DIMENSIONS AND TOLERANCES TO AID IN DEVELOPING BEZEL OPENING.
 FOR EXAMPLE USING A BOARD THICKNESS OF 0.125" THE RECOMMENDED VALUES WOULD BE:
 A = .125/3.18 ± 10%
 B = .434/11.03 ± .004
 C = .088/2.23 ± .004

EC NO: USY2006-0225 DRW:KSIMONSO06/01/24 CHKD:BRUSSELL2006/01/24 APPR:BRUSSELL2006/01/25 REV DESCRIPTION	QUALITY SYMBOLS	GENERAL TOLERANCES (UNLESS SPECIFIED)	SCALE 4:1	DESIGN UNITS METRIC	THIRD ANGLE PROJECTION	REVISE ON CAD ONLY
	4 PLACES ± --- ± --- 3 PLACES ± --- ± .005 2 PLACES ± 0.13 ± .01 1 PLACE ± 0.25 ± ---	DIMENSION STYLE IN/MM DRAWN BY DATE KSIMONSO 2004/10/09 CHECKED BY DATE BRUSSELL 2004/10/09 APPROVED BY DATE BRUSSELL 2004/10/09	DIMENSION STYLE IN/MM TITLE 1X4 SFP GANGED CAGE ASSY W/ 0.090 GASKET, PRESS FIT, F/ LIGHT PIPE MOLEX INCORPORATED MATERIAL NO. 747280411 DOCUMENT NO. SD-74728-411 SHEET NO. 4 OF 5			
	DRAFT WHERE APPLICABLE MUST REMAIN WITHIN DIMENSIONS	THIS DRAWING CONTAINS INFORMATION THAT IS PROPRIETARY TO MOLEX INCORPORATED AND SHOULD NOT BE USED WITHOUT WRITTEN PERMISSION				


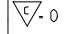
19 18 17 16 15 14 13 12 11 10 9 8 7 6 5 4 3 2 1

20 | 19 | 18 | 17 | 16 | 15 | 14 | 13 | 12 | 11 | 74728 | 9 | 8 | 7 | 6 | 5 | 4 | 3 | 2 | 1

DATE	REV	CHANGES	COMMENTS
10/09/2004	A	INITIAL RELEASE	N/A
01/20/2006	B	ADDED PDB AND BEZEL LAYOUTS. UPDATED NOTES.	DOCUMENT CHANGE ONLY

L
K
J
I
H
G
F
E
D
C
B
A

L
K
J
I
H
G
F
E
D
C
B
A

EC NO: USY2006-0225 DRW:KSIMONSO06/01/24 CHK:D:BRUSSELL2006/01/24 APPR:BRUSSELL2006/01/25	QUALITY SYMBOLS	GENERAL TOLERANCES (UNLESS SPECIFIED)	SCALE 1:1	DESIGN UNITS METRIC	THIRD ANGLE PROJECTION	REVISE ON CAD ONLY															
	 	<table border="1"> <thead> <tr> <th></th> <th>mm</th> <th>INCH</th> </tr> </thead> <tbody> <tr> <td>4 PLACES</td> <td>± ---</td> <td>± ---</td> </tr> <tr> <td>3 PLACES</td> <td>± ---</td> <td>± .005</td> </tr> <tr> <td>2 PLACES</td> <td>± 0.13</td> <td>± .01</td> </tr> <tr> <td>1 PLACE</td> <td>± 0.25</td> <td>± ---</td> </tr> </tbody> </table>		mm	INCH	4 PLACES	± ---	± ---	3 PLACES	± ---	± .005	2 PLACES	± 0.13	± .01	1 PLACE	± 0.25	± ---	DIMENSION STYLE IN/MM DRAWN BY DATE KSIMONSO 2004/10/09		TITLE 1X4 SFP GANGED CAGE ASSY W/ 0.090 GASKET, PRESS FIT, F/ LIGHT PIPE	
			mm	INCH																	
	4 PLACES	± ---	± ---																		
3 PLACES	± ---	± .005																			
2 PLACES	± 0.13	± .01																			
1 PLACE	± 0.25	± ---																			
ANGULAR ± 1 ° DRAFT WHERE APPLICABLE MUST REMAIN WITHIN DIMENSIONS		CHECKED BY DATE BRUSSELL 2004/10/09		MATERIAL NO. DOCUMENT NO. SHEET NO. 747280411 SD-74728-411 5 OF 5																	
		APPROVED BY DATE BRUSSELL 2004/10/09		MOLEX INCORPORATED THIS DRAWING CONTAINS INFORMATION THAT IS PROPRIETARY TO MOLEX INCORPORATED AND SHOULD NOT BE USED WITHOUT WRITTEN PERMISSION																	

19 | 18 | 17 | 16 | 15 | 14 | 13 | 12 | 11 | 10 | 9 | 8 | 7 | 6 | 5 | 4 | 3 | 2 | 1