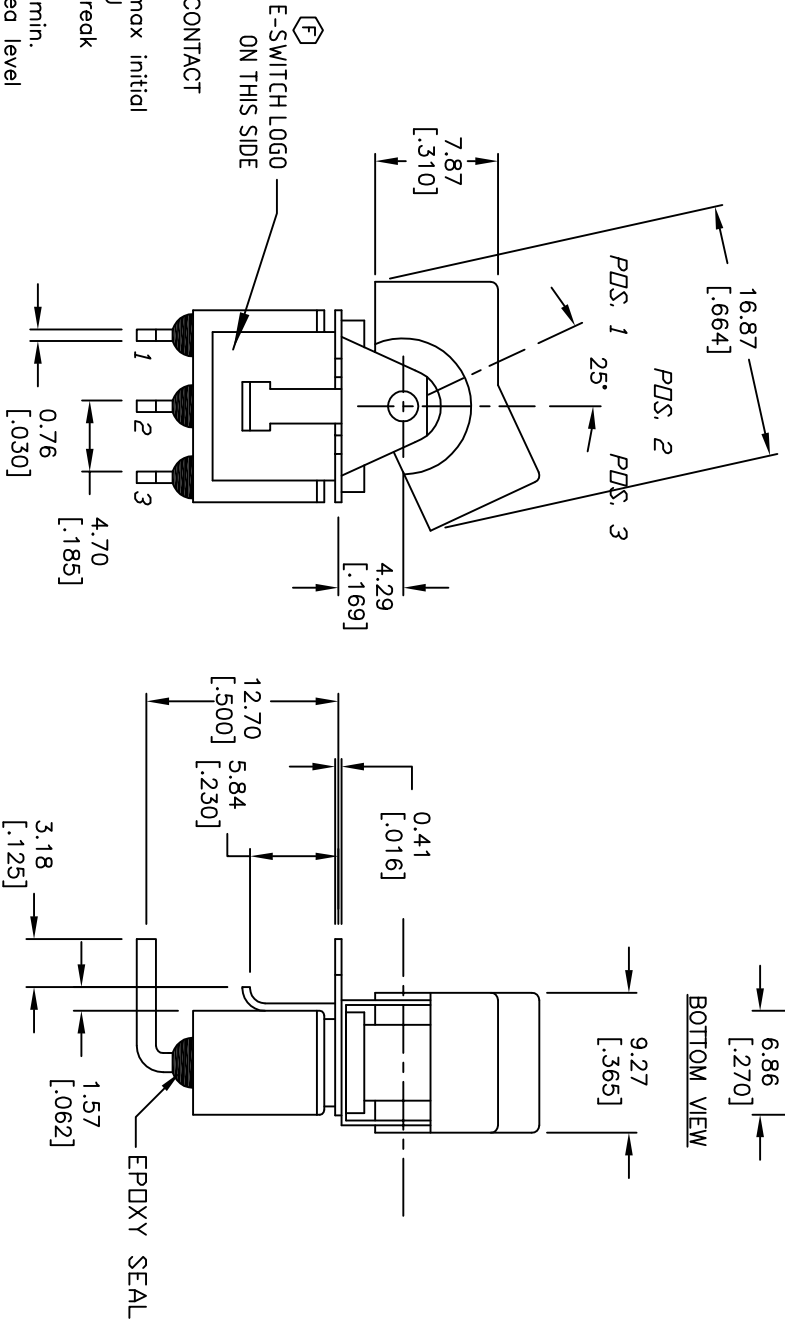
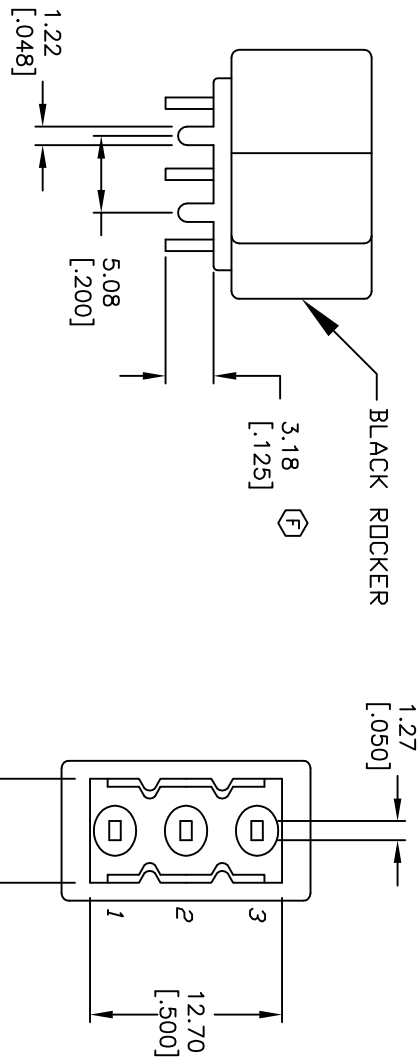


CIRCUIT: SPDT

SWITCH FUNCTION			
PDS. 1	PDS. 2	PDS. 3	
DN	NONE	DN	
2-3	OPEN	2-1	

NOTES:

1. ALL DIMENSIONS IN MM [INCH]
2. GENERAL TOLERANCE: X.X=±0.4 X.XX=±0.25
3. TERM. NOS. FOR REF. ONLY
4. RATING: 5A @120VAC OR 28VDC 2A @250VAC
5. MATERIAL: FIXED TERMINAL & MOVING CONTACT  
Copper Alloy w/Silver Plate
6. CONTACT RESISTANCE: 10mILLI Ohms max initial @2-4VDC, 100mA for AG & AU
7. ELECTRICAL LIFE: 50,000 make-and-break cycles at full load.
8. INSULATION RESISTANCE: 1,000M ohm min.
9. DIELECTRIC STRENGTH: 1000V RMS @sea level
10. OPERATING TEMP: -30°C to 85°C



REV.	ECN No.	DESCRIPTION	DATE	CHKD
F	18716	LOGO LOCATION, DIMENSION CHANGE	11/18/09	BLR
E	14072	CORRECT CIRCUIT CALLOUT	6/8/04	AR
D	12129	REVISED AND REDRAWN	5/6/02	CJB

SCALE	DATE	DR	DWG	REV
2:1	5/6/02	BLR	T311010	F

THE INFORMATION CONTAINED IN THIS DOCUMENT IS PROPRIETARY TO E-SWITCH AND IS NOT TO BE COPIED OR TRANSMITTED



300 SP-1 (J1 BLK) M6 QE