




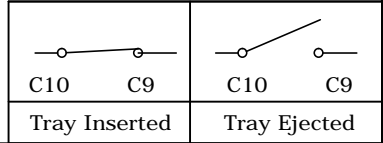
REV.	DESCRIPTION	DRAWN	DATE
	SEE SHEET ONE		

- Remark:
- - - Socket Boundary
  -  Solder Pad
  -  Through Hole (Required)
  -  Pattern Keep Out Area

Pin Assignment

C1	Vcc
C2	RST
C3	CLK
C5	GND
C6	Vpp
C7	I/O
C9	Detect Switch
C10	Detect Lever

Switch Circuit  
(Detect by tray not SIM card)

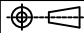


UNLESS OTHERWISE SPECIFIED TOLERANCE

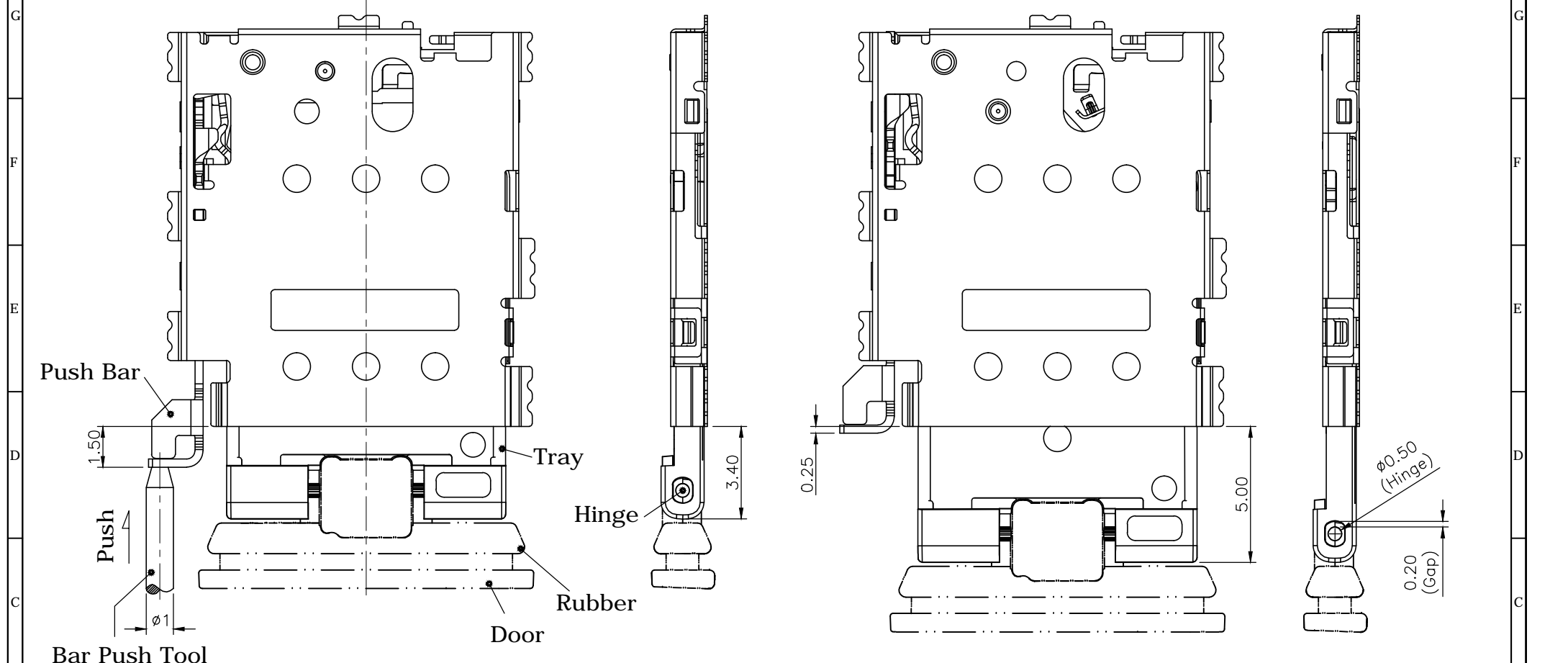
UNIT:	DECIMAL	LINEAR	ANGLES
mm	X.	±0.50	±5°
	X.X	±0.25	±3°
	X.XX	±0.12	±1°



WWW.ATTEND.COM.TW

DRAWN	Fros	2015/07/01	DRAWN NAME:	Nano SIM Socket, Top Mount, Eject Type, H1.35, Combination With Tray
CHECKED	Zola	2015/07/01	PRODUCT NO.	115S-ACAO
APPROVED	Ken	2015/07/01	FILE NAME	115S-ACAO_B_5
	SCALE	SHEET	SIZE	
	5/1	2/6	A4	

REV.	DESCRIPTION	DRAWN	DATE
	SEE SHEET ONE		




**115S-ACA0 with 115S-ACA1  
Tray insertion dimension drawing**

**115S-ACA0 with 115S-ACA1  
Tray ejection dimension drawing**

Part description  
Hinge, rubber and door are made and assembled by the client

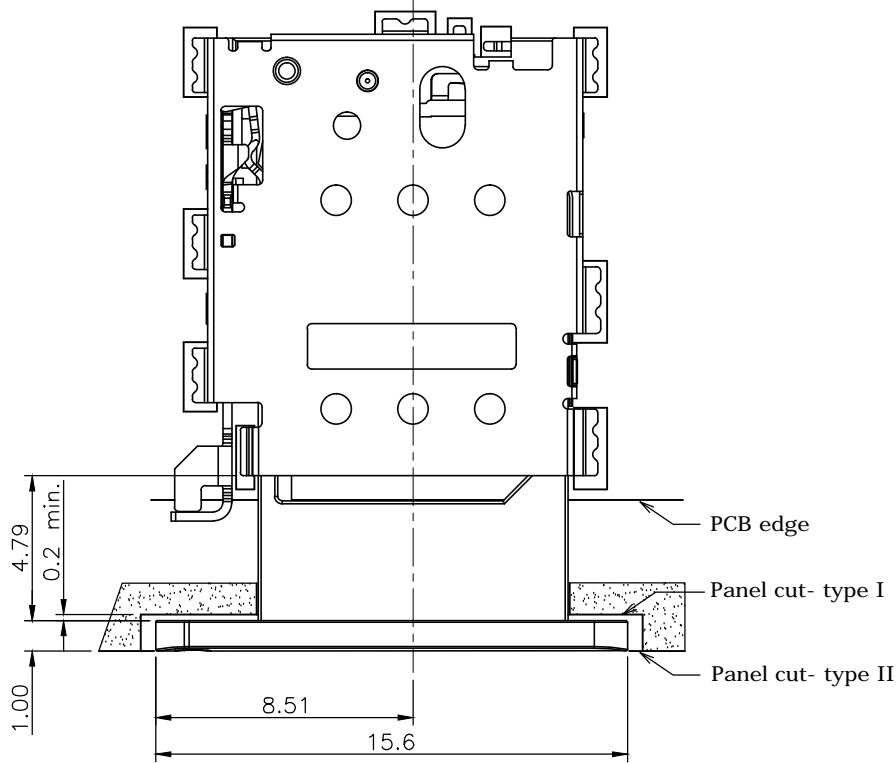
Hinge: The connection between tray and door (P/N: 115-00001)  
Rubber: Waterproof function  
Door: Design by the client  
Bar Push Tool: Design by the client or (P/N: 115-00002)

Tray ejecting types notes:  
1. Pull out the door/ tray directly  
2. Push the BAR PUSH linkage mechanism

UNLESS OTHERWISE SPECIFIED TOLERANCE				 WWW.ATTEND.COM.TW
UNIT:	DECIMAL	LINEAR	ANGLES	
mm	X.	±0.50	±5°	
	X.X	±0.25	±3°	
	X.XX	±0.12	±1°	
DRAWN	Fros	2015/07/01	DRAWN NAME:	
CHECKED	Zola	2015/07/01	Nano SIM Socket, Top Mount, Eject Type, H1.35, Combination With Tray	
APPROVED	Ken	2015/07/01	PRODUCT NO. 115S-ACA0	
SCALE	5/1	SHEET 3/6	SIZE A4	FILE NAME 115S-ACA0_B_5

**Recommendation:**

Suggested panel cut (Type I/II) can lead the push bar to touch and press precisely lever. If the design does not follow this instruction, a track for the push bar should be considered for the designer to prevent the deviation of the entry of the push bar.

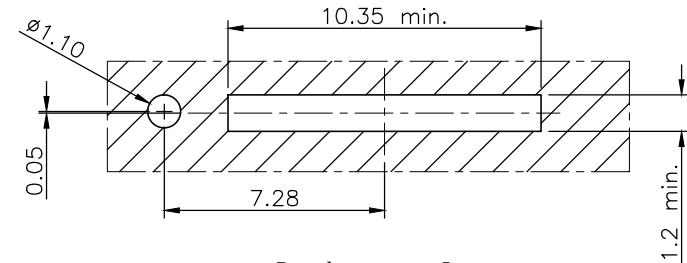


115S-ACA0 with 115S-ACA2

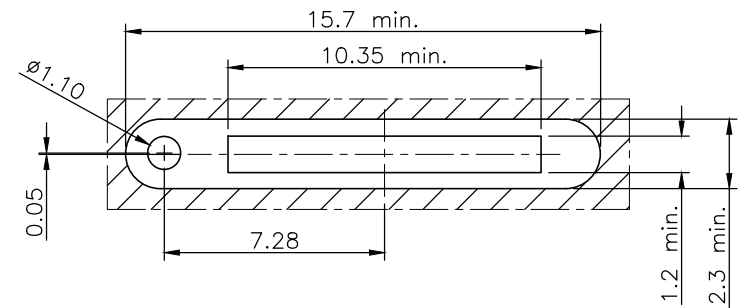
REV.	DESCRIPTION	DRAWN	DATE
	SEE SHEET ONE		

**Tray ejecting types notes:**

1. Pull out the door/ tray directly
2. Push the BAR PUSH linkage mechanism



Panel cut- type I



Panel cut- type II

UNLESS OTHERWISE SPECIFIED TOLERANCE

UNIT:	DECIMAL	LINEAR	ANGLES
mm	X.	±0.50	±5°
	X.X	±0.25	±3°
	X.XX	±0.12	±1°



WWW.ATTEND.COM.TW

DRAWN	Fros	2015/07/01	DRAWN NAME:
CHECKED	Zola	2015/07/01	Nano SIM Socket, Top Mount, Eject Type, H1.35, Combination With Tray
APPROVED	Ken	2015/07/01	PRODUCT NO. 115S-ACA0
SCALE	4/1	SHEET 4/6	SIZE A4
			FILE NAME 115S-ACA0_B_5

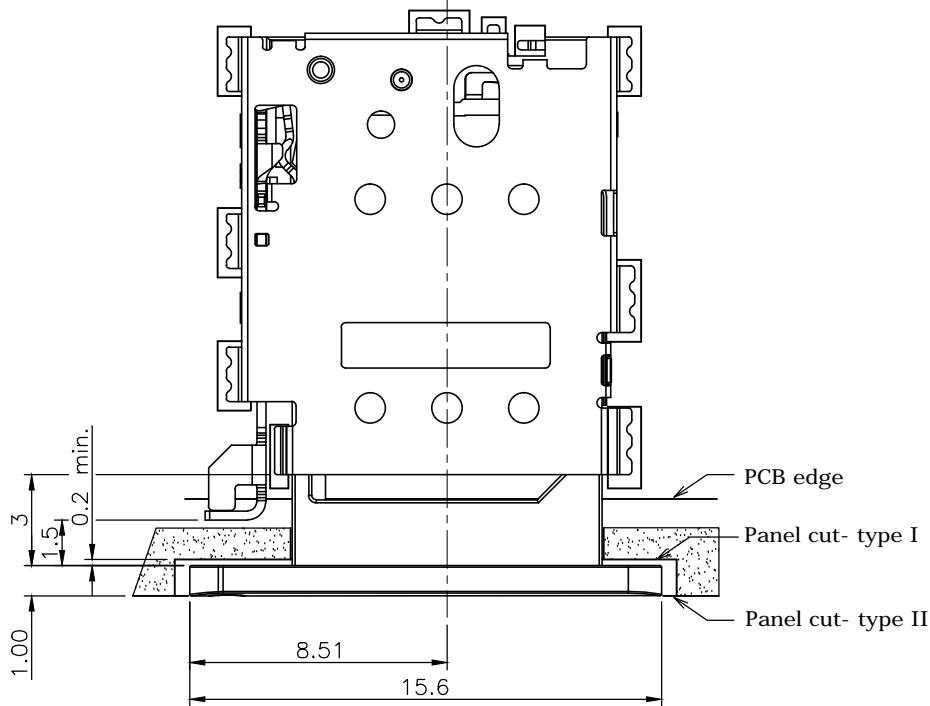
**Recommendation:**

Suggested panel cut (Type I/II) can lead the push bar to touch and press precisely lever. If the design does not follow this instruction, a track for the push bar should be considered for the designer to prevent the deviation of the entry of the push bar.

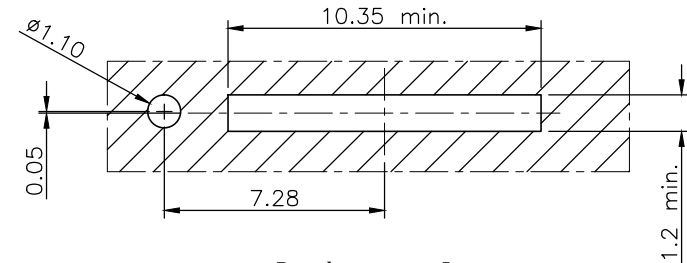
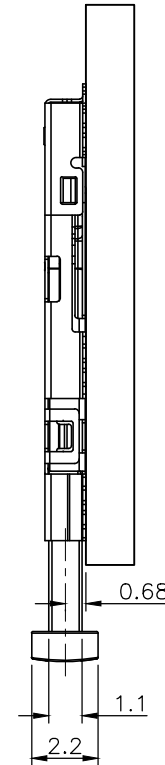
REV.	DESCRIPTION	DRAWN	DATE
	SEE SHEET ONE		

**Tray ejecting types notes:**

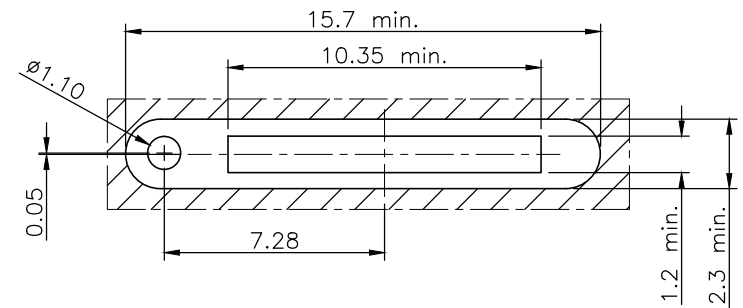
1. Pull out the door/ tray directly
2. Push the BAR PUSH linkage mechanism



115S-ACAO with 115S-ACA3



Panel cut- type I



Panel cut- type II

UNLESS OTHERWISE SPECIFIED TOLERANCE			
UNIT:	DECIMAL	LINEAR	ANGLES
mm	X.	±0.50	±5°
	X.X	±0.25	±3°
	X.XX	±0.12	±1°
DRAWN	Fros	2015/07/01	DRAWN NAME: Nano SIM Socket, Top Mount, Eject Type, H1.35, Combination With Tray
CHECKED	Zola	2015/07/01	
APPROVED	Ken	2015/07/01	
SCALE	4/1	SHEET 5/6	
FILE NAME		115S-ACAO_B_5	



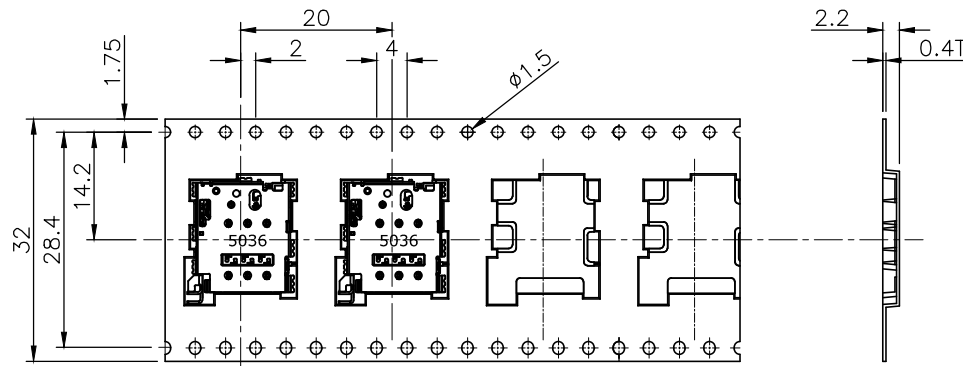
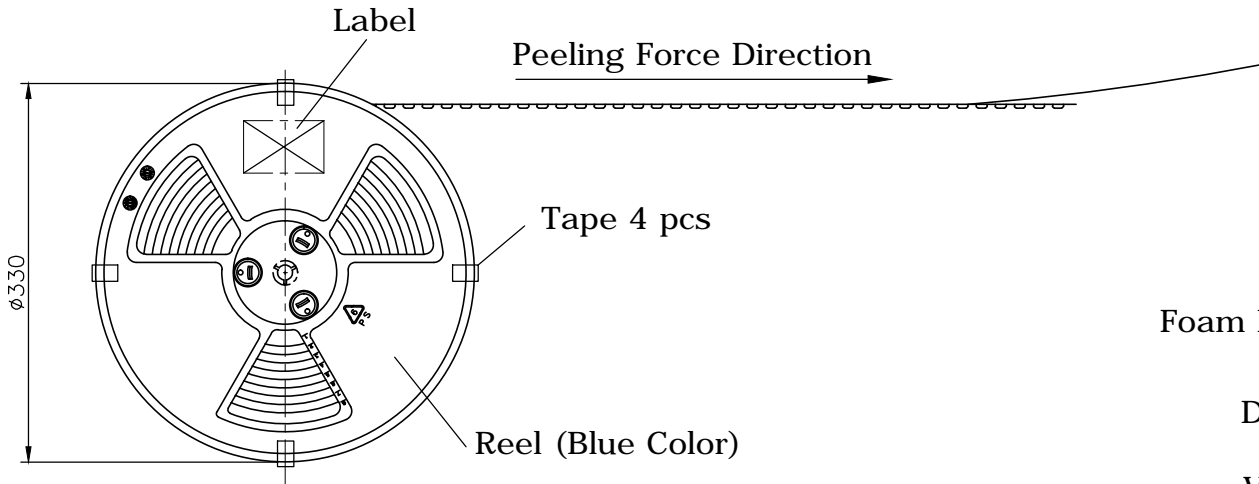
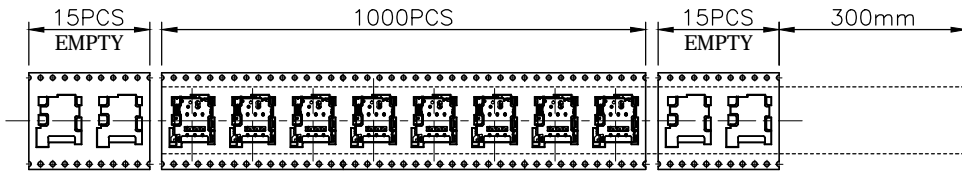
WWW.ATTEND.COM.TW

G  
F  
E  
D  
C  
B  
A

G  
F  
E  
D  
C  
B  
A

1 2 3 4 5 6 7 8 9 10

REV.	DESCRIPTION	DRAWN	DATE
	SEE SHEET ONE		



CARRIER TAPE

### PACKAGING SPECIFICATION:

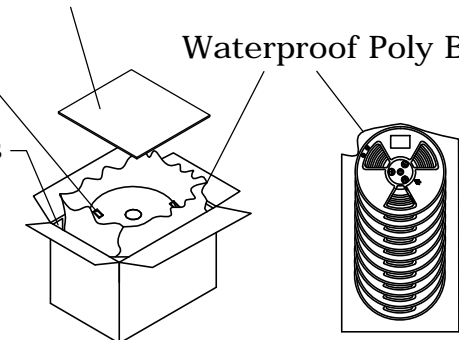
1. MATERIAL
  - 1.1 Embossed Carrier Tape: PS Black
  - 1.2 Top Cover Tape: PET  
20-130g(Peel Speed 300mm/Minute)  
Peeling angle: 165° to 180°
  - 1.3 Taping Reel: Plastic
2. PACKING
  - 2.1 Quantity:  
1,000Piece/ Reel  
9 Reel (9,000Piece)/ Carton

Foam Rubber Cushion 2pcs

Desiccant 2pcs

Vold Filler 4pcs

Waterproof Poly Bag



Cartion: 340\*W340\*H355

Total 9 Reels

UNLESS OTHERWISE SPECIFIED TOLERANCE			
UNIT:	DECIMAL	LINEAR	ANGLES
mm	X.	±0.50	±5°
	X.X	±0.25	±3°
	X.XX	±0.12	±1°



WWW.ATTEND.COM.TW

DRAWN	Fros	2015/07/01	DRAWN NAME:	
CHECKED	Zola	2015/07/01	Nano SIM Socket, Top Mount, Eject Type, H1.35, Combination With Tray	
APPROVED	Ken	2015/07/01	PRODUCT NO.	115S-ACAO
	SCALE N/A	SHEET 6/6	SIZE A4	FILE NAME 115S-ACAO_B_5